



Datasheet for ABIN1327270
anti-IL1RN antibody (AA 1-177)



[Go to Product page](#)

2 Images

Overview

Quantity:	100 µL
Target:	IL1RN
Binding Specificity:	AA 1-177
Reactivity:	Human
Host:	Rabbit
Clonality:	Polyclonal
Conjugate:	This IL1RN antibody is un-conjugated
Application:	Western Blotting (WB), Immunoprecipitation (IP)

Product Details

Purpose:	Rabbit polyclonal antibody raised against a full-length human IL1RN protein.
Immunogen:	IL1RN (NP_776214.1, 1 a.a. ~ 177 a.a) full-length human protein.
Sequence:	MEICRGLRSH LITLLLFLFH SETICRPSGR KSSKMQAFRI WDVNQKTFYL RNNQLVAGYL QGPNVNLEEK IDVVPIEPHA LFLGIHGGKM CLSCVKSGDE TRLQLEAVNI TDLSENKQD KRFAFIRSDS GPTTSFESAA CPGWFLCTAM EADQPVSLTN MPDEGVMVTK FYFQEDE
Cross-Reactivity:	Human
Characteristics:	Antibody reactive against mammalian transfected lysate.

Target Details

Target:	IL1RN
---------	-------

Target Details

Alternative Name:	IL1RN (IL1RN Products)
Background:	Full Gene Name: interleukin 1 receptor antagonist Synonyms: ICIL-1RA,IL-1ra3,IL1F3,IL1RA,IRAP,MGC10430
Gene ID:	3557
NCBI Accession:	NM_173842
Pathways:	NF-kappaB Signaling , Hormone Transport , Cancer Immune Checkpoints

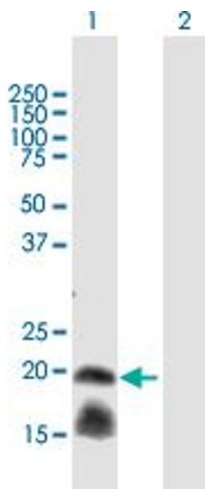
Application Details

Application Notes:	Optimal working dilution should be determined by the investigator.
Restrictions:	For Research Use only

Handling

Format:	Liquid
Buffer:	No additive
Preservative:	Without preservative
Handling Advice:	Aliquot to avoid repeated freezing and thawing.
Storage:	-20 °C
Storage Comment:	Store at -20°C or lower. Aliquot to avoid repeated freezing and thawing.

Images

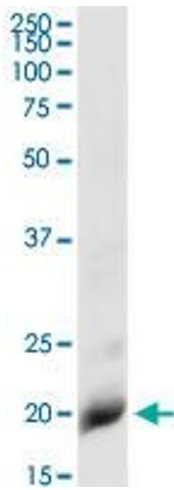


Western Blotting

Image 1. Western Blot analysis of IL1RN expression in transfected 293T cell line by IL1RN MaxPab polyclonal antibody.

Lane 1: IL1RN transfected lysate(20.1 KDa).

Lane 2: Non-transfected lysate.



Immunoprecipitation

Image 2. Immunoprecipitation of IL1RN transfected lysate using anti-IL1RN MaxPab rabbit polyclonal antibody and Protein A Magnetic Bead , and immunoblotted with IL1RN purified MaxPab mouse polyclonal antibody (B01P) .