



Datasheet for ABIN1327271
anti-SLC30A5 antibody (AA 1-118)



[Go to Product page](#)

2 Images

Overview

Quantity:	200 µL
Target:	SLC30A5
Binding Specificity:	AA 1-118
Reactivity:	Human
Host:	Mouse
Clonality:	Monoclonal
Application:	Western Blotting (WB), ELISA

Product Details

Purpose:	Mouse monoclonal antibody raised against a full-length recombinant SLC30A5.
Immunogen:	SLC30A5 (AAH00808.1, 1 a.a. ~ 118 a.a) full-length recombinant protein with GST tag. MW of the GST tag alone is 26 KDa.
Sequence:	MEEKYGGDVL AGPGGGGGLG PVDVPSARLT KYIVLLCFTK FLKAVGLFES YDLLKAVHIV QFIFILKLG T AFFMVL FQKP FSSGKTITKH QIIGSLKIPG RKEFKDKKLN DPRKLVGN
Clone:	2E10
Isotype:	IgG2a kappa
Cross-Reactivity:	Human

Target Details

Target:	SLC30A5
---------	---------

Target Details

Alternative Name:	SLC30A5 (SLC30A5 Products)
Background:	Full Gene Name: solute carrier family 30 (zinc transporter), member 5 Synonyms: FLJ12496,FLJ12756,MGC5499,ZNT5,ZNTL1,ZTL1,ZnT-5
Gene ID:	64924
Pathways:	Peptide Hormone Metabolism , Transition Metal Ion Homeostasis , Proton Transport

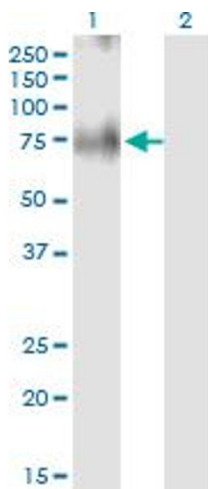
Application Details

Application Notes:	Optimal working dilution should be determined by the investigator.
Comment:	Product Quality tested by: Antibody Reactive Against Recombinant Protein.
Restrictions:	For Research Use only

Handling

Format:	Liquid
Buffer:	In ascites fluid
Handling Advice:	Aliquot to avoid repeated freezing and thawing.
Storage:	-20 °C
Storage Comment:	Store at -20°C or lower. Aliquot to avoid repeated freezing and thawing.

Images

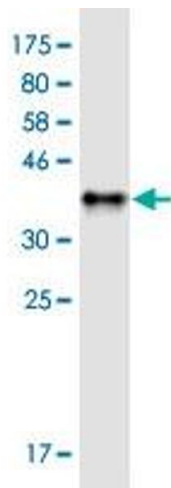


Western Blotting

Image 1. Western Blot analysis of SLC30A5 expression in transfected 293T cell line by SLC30A5 monoclonal antibody (M03), clone 2E10.

Lane 1: SLC30A5 transfected lysate (Predicted MW: 84 KDa).

Lane 2: Non-transfected lysate.



Western Blotting

Image 2. Western Blot detection against Immunogen (38.72 kDa).