



[Go to Product page](#)

Datasheet for ABIN1327341  
**anti-LIMCH1 antibody (AA 1-897)**

1 Image

Overview

Quantity:	50 µg
Target:	LIMCH1
Binding Specificity:	AA 1-897
Reactivity:	Human
Host:	Mouse
Clonality:	Polyclonal
Conjugate:	This LIMCH1 antibody is un-conjugated
Application:	Western Blotting (WB)

Product Details

Purpose:	Mouse polyclonal antibody raised against a full-length human LIMCH1 protein.
Immunogen:	LIMCH1 (AAH23546.1, 1 a.a. ~ 897 a.a) full-length human protein.
Sequence:	MRKDTDDIES PKRSIRDSGY IDCWDSERSD SLSPPRHGRD DSFDSLDSFG SRSRQTPSPD VVLRGSSDGR GSDSESDLPH RKLDPVKKDD MSARRTSHGE PKSAVPFNQY LPNKSNTAY VPAPLRKKKA EREEYRKSWS TATSPLGGER PFRYGPRTPV SDDAESTSMF DMRCEEEAAV QPHSRARQEQ LQLINNQLRE EDDKWQDDLA RWKSRRRSVS QDLIKKEER KKMEKLLAGE DGTSEERRSI KTYREIVQEK ERRERELHEA YKNARSQEEA EGILQYYIER FTISEAVLER LEMPKILERS HSTEPNLSSF LNDPNPMKYL RQQLPPPKF TATVETTIAR ASVLDTSMSA GSGSPSKTVT PKAVPMLTPK PYSQPKNSQD VLKTFKVDGK VSVNGETVHR EEEKERECP VAPAHSLTKS QMFEGVARVH GSPLKQDN GSIEINIKK NSVPQELAAT TEKTEPNSQE DKNDGGKSRK GNIELASSEP QHFTTTVTRC SPTVAFVEFP SSPQLKNDVS EEKDQKKPEN EMSGKVELVL SQKVVKPKSP EPEATLTPF LDKMPEANQL HLPNLNSQVD SPSEKSPVT

## Product Details

---

TPFKFWAWDP EEERRRQEKW QQEQERLLQE RYQKEQDKLK EWEKAQKEV EEEERRYYEE  
ERKIIEDTVV PFTVSSSSAD QLSTSSSMTE GSGTMNKIDL GNCQDEKQDR RWKKSFGDD  
SDLLKTRRES DRLEEKGSLT EGALAHSGNP VSKGVHEDHQ LDTEAGAPHC GTNPQLAQDP  
SQNQQTSNPT HSEDEVKPKT LPLDKSINHQ IESPERRKS ISGKKLCSSC GLPLGKGAAM  
IITLNLVYFH IQCFRCGICK GQLGDAVSGT DVRIRNGLLN CNDCYMRSRS AGQPTTL

Cross-Reactivity: Human

Characteristics: Antibody reactive against mammalian transfected lysate.

## Target Details

---

Target: LIMCH1

Alternative Name: LIMCH1 ([LIMCH1 Products](#))

Name:

Background: Full Gene Name: LIM and calponin homology domains 1

Synonyms:

DKFZp434I0312,DKFZp686A01247,DKFZp686B2470,DKFZp686G18243,DKFZp686G2094,DKFZp781C1754,DKFZp781I14

Gene ID: 22998

## Application Details

---

Application Notes: Optimal working dilution should be determined by the investigator.

Restrictions: For Research Use only

## Handling

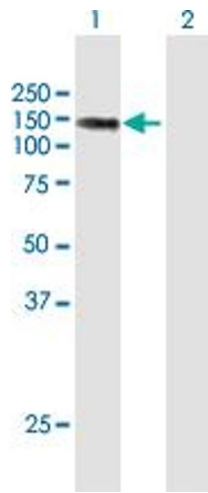
---

Buffer: In 1x PBS, pH 7.4

Handling Advice: Aliquot to avoid repeated freezing and thawing.

Storage: -20 °C

Storage Comment: Store at -20°C or lower. Aliquot to avoid repeated freezing and thawing.



### Western Blotting

**Image 1.** Western Blot analysis of LIMCH1 expression in transfected 293T cell line by LIMCH1 MaxPab polyclonal antibody.

Lane 1: DKFZP686A01247 transfected lysate(98.67 KDa).

Lane 2: Non-transfected lysate.