



[Go to Product page](#)

Datasheet for ABIN1327350  
**anti-IL20RB antibody (AA 1-147)**

2 Images

Overview

Quantity:	50 µg
Target:	IL20RB
Binding Specificity:	AA 1-147
Reactivity:	Human
Host:	Mouse
Clonality:	Polyclonal
Conjugate:	This IL20RB antibody is un-conjugated
Application:	Western Blotting (WB), Immunofluorescence (IF)

Product Details

Purpose:	Mouse polyclonal antibody raised against a full-length human IL20RB protein.
Immunogen:	IL20RB (AAH33292.1, 1 a.a. ~ 147 a.a) full-length human protein.
Sequence:	MKHLWMWSPV IAPGETVYHS VEYQGEYESL YTSHIWIPSS WCSLTEGPEC DVTDDITATV PYNLRVRATL GSQTSAWSIL KHPFNRNSTI LTRPGMEITK DGFHLVIELE DLGPQFEFLV AYWRREPGAE ERFPFWYWPC LPLLASC
Cross-Reactivity:	Human
Characteristics:	Antibody reactive against mammalian transfected lysate.

Target Details

Target:	IL20RB
---------	--------

## Target Details

Alternative Name:	IL20RB ( <a href="#">IL20RB Products</a> )
Background:	Full Gene Name: interleukin 20 receptor beta Synonyms: DIRS1, FNDC6, IL-20R2, MGC34923
Gene ID:	53833
Pathways:	<a href="#">Regulation of Leukocyte Mediated Immunity</a>

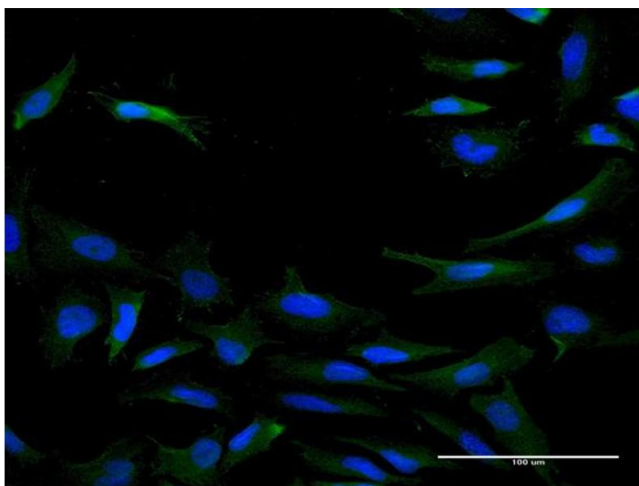
## Application Details

Application Notes:	Optimal working dilution should be determined by the investigator.
Restrictions:	For Research Use only

## Handling

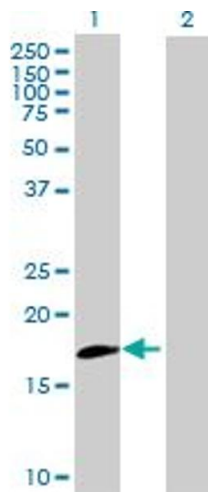
Buffer:	In 1x PBS, pH 7.4
Handling Advice:	Aliquot to avoid repeated freezing and thawing.
Storage:	-20 °C
Storage Comment:	Store at -20°C or lower. Aliquot to avoid repeated freezing and thawing.

## Images



### Immunofluorescence

**Image 1.** Immunofluorescence of purified MaxPab antibody to IL20RB on HeLa cell. [antibody concentration 10 ug/ml]



### Western Blotting

**Image 2.** Western Blot analysis of IL20RB expression in transfected 293T cell line by IL20RB MaxPab polyclonal antibody.

Lane 1: IL20RB transfected lysate(16.28 kDa).

Lane 2: Non-transfected lysate.