



[Go to Product page](#)

Datasheet for ABIN1327354  
**anti-ELAVL4 antibody (AA 1-366)**

1 Image

Overview

Quantity:	50 µg
Target:	ELAVL4
Binding Specificity:	AA 1-366
Reactivity:	Human
Host:	Mouse
Clonality:	Polyclonal
Conjugate:	This ELAVL4 antibody is un-conjugated
Application:	Western Blotting (WB)

Product Details

Purpose:	Mouse polyclonal antibody raised against a full-length human ELAVL4 protein.
Immunogen:	ELAVL4 (AAH36071.1, 1 a.a. ~ 366 a.a) full-length human protein.
Sequence:	MVMIISTMEP QVSNPTSNT SNGPSSNNRN CPSPMQTGAT TDDSKTNLIV NYLPQNMTQE EFRSLFGSIG EIESCKLVRD KITGQSLGYG FVNYIDPKDA EKAINTLNGL RLQTKTIKVS YARPSSASIR DANLYVSGLP KTMTQKELEQ LFSQYGRIIT SRILVGQVTG VSRGVGFIRF DKRIEAEAI KGLNGQKPSG ATEPITVKFA NNPSQKSSQA LLSQLYQSPN RRYPGPLHHQ AQRFRLDNLL NMAYGVKRFS PITIDGMTSL VGMNIPGHTG TGWCIFVYNL SPDSDESVLW QLFGPFGAVN NVKVIRDFNT NKCKGFGFVT MTNYDEAAMA ITSLNGYRLG DRVLQVSFKT NKAHKS
Cross-Reactivity:	Human
Characteristics:	Antibody reactive against mammalian transfected lysate.

## Target Details

Target:	ELAVL4
Alternative Name:	ELAVL4 ( <a href="#">ELAVL4 Products</a> )
Background:	Full Gene Name: ELAV (embryonic lethal, abnormal vision, Drosophila)-like 4 (Hu antigen D) Synonyms: HUD,PNEM
Gene ID:	1996

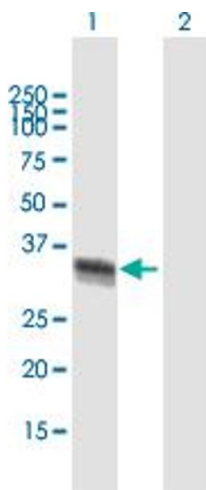
## Application Details

Application Notes:	Optimal working dilution should be determined by the investigator.
Restrictions:	For Research Use only

## Handling

Buffer:	In 1x PBS, pH 7.4
Handling Advice:	Aliquot to avoid repeated freezing and thawing.
Storage:	-20 °C
Storage Comment:	Store at -20°C or lower. Aliquot to avoid repeated freezing and thawing.

## Images



### Western Blotting

**Image 1.** Western Blot analysis of ELAVL4 expression in transfected 293T cell line by ELAVL4 MaxPab polyclonal antibody.

Lane 1: ELAVL4 transfected lysate(40.26 KDa).

Lane 2: Non-transfected lysate.