



[Go to Product page](#)

Datasheet for ABIN1327366
anti-TCR alpha antibody (AA 1-278)

1 Image

Overview

Quantity:	50 µg
Target:	TCR alpha (TRA)
Binding Specificity:	AA 1-278
Reactivity:	Human
Host:	Mouse
Clonality:	Polyclonal
Conjugate:	This TCR alpha antibody is un-conjugated
Application:	Western Blotting (WB)

Product Details

Purpose:	Mouse polyclonal antibody raised against a full-length human TRA protein.
Immunogen:	TRA (AAH71758.1, 1 a.a. ~ 278 a.a) full-length human protein.
Sequence:	MAMLLGASVL ILWLQPDWVN SQQKNDDQQV KQNSP SLSVQ EGRISILNCD YTNSMFDYFL WYKKYPAEGP TFLISSIK DKNEDGRFTV FLNKS AKHLS LHIVPSQPGD SAVYFCAVRY NNNDMRF GAG TRLTVKPNIQ NPDPAVYQLR DSKSSDKSVC LFTDFDSQTN VSQKSDSDVY ITDKTVLDMR SMDFKSNSAV AWSNKSDFAC ANAFNNSIIP EDTFFPSPES SCDVKLVEKS FETDTNLNFQ NLSVIGFRIL LLKVAGFNLL MTLRLWSS
Cross-Reactivity:	Human
Characteristics:	Antibody reactive against mammalian transfected lysate.

Target Details

Target:	TCR alpha (TRA)
Alternative Name:	TRA@ (TRA Products)
Background:	Full Gene Name: T cell receptor alpha locus Synonyms: FLJ22602,MGC117436,MGC22624,MGC23964,MGC71411,TCRA,TCRD,TRA
Gene ID:	6955

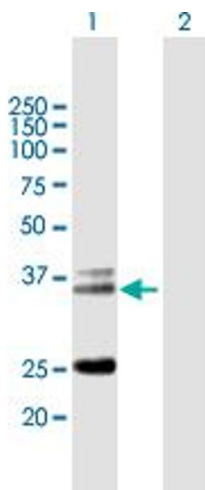
Application Details

Application Notes:	Optimal working dilution should be determined by the investigator.
Restrictions:	For Research Use only

Handling

Buffer:	In 1x PBS, pH 7.4
Handling Advice:	Aliquot to avoid repeated freezing and thawing.
Storage:	-20 °C
Storage Comment:	Store at -20°C or lower. Aliquot to avoid repeated freezing and thawing.

Images



Western Blotting

Image 1. Western Blot analysis of TRA@ expression in transfected 293T cell line by TRA@ MaxPab polyclonal antibody.

Lane 1: TRA@ transfected lysate(30.58 KDa).

Lane 2: Non-transfected lysate.