



[Go to Product page](#)

Datasheet for ABIN1327371

anti-TSPY-Like 3 antibody (AA 1-355)

1 Image

Overview

| | |
|----------------------|--|
| Quantity: | 50 µg |
| Target: | TSPY-Like 3 (TSPYL3) |
| Binding Specificity: | AA 1-355 |
| Reactivity: | Human |
| Host: | Mouse |
| Clonality: | Polyclonal |
| Conjugate: | This TSPY-Like 3 antibody is un-conjugated |
| Application: | Western Blotting (WB) |

Product Details

| | |
|-------------------|--|
| Purpose: | Mouse polyclonal antibody raised against a full-length human TSPYL3 protein. |
| Immunogen: | TSPYL3 (AAI01557.1, 1 a.a. ~ 355 a.a) full-length human protein. |
| Sequence: | MADKRAQTPE AAARPPPGLA REGDARTVPA ARAREAGGRG SLHPAAGPGT AFPSPGRGEA ASTATTPSLE NGRVRDEAPE TCGA EGLGTR AGASEKAEDA NKEEGAIFKK EPAEEVEKQQ EGEEKQEVAA EAQEGPRLN LGALIVDPLE AIQWEAEAVS AQADRAYLPL ERRFGRMHRL YLARRSFIQ NIPGFVWTF LNHPQLSAMI SPRDEDMLCY LMNLEVRELH HSRTGCKFKF RFWSNPYFQN KVIVKEYEGR ASGRVSIAT RIRWHWGQEP PALVHRNRDT VRSFFSWFSQ HSLPEADRVA QIIKDDLWPN PLQYYLLGDR PCRARGGLAR WPTETPSRPY GFQSG |
| Cross-Reactivity: | Human |
| Characteristics: | Antibody reactive against mammalian transfected lysate. |

Target Details

| | |
|-------------------|--|
| Target: | TSPY-Like 3 (TSPYL3) |
| Alternative Name: | TSPYL3 (TSPYL3 Products) |
| Background: | Full Gene Name: TSPY-like 3 (pseudogene) Synonyms: MGC126605,MGC126607,bA392M18.1 |
| Gene ID: | 128854 |

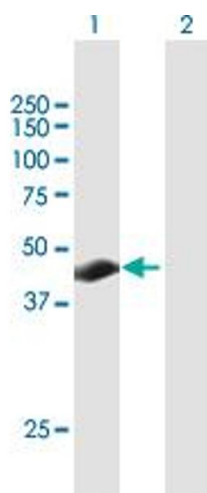
Application Details

| | |
|--------------------|--|
| Application Notes: | Optimal working dilution should be determined by the investigator. |
| Restrictions: | For Research Use only |

Handling

| | |
|------------------|--|
| Buffer: | In 1x PBS, pH 7.4 |
| Handling Advice: | Aliquot to avoid repeated freezing and thawing. |
| Storage: | -20 °C |
| Storage Comment: | Store at -20°C or lower. Aliquot to avoid repeated freezing and thawing. |

Images



Western Blotting

Image 1. Western Blot analysis of TSPYL3 expression in transfected 293T cell line by TSPYL3 MaxPab polyclonal antibody.

Lane 1: TSPYL3 transfected lysate(39.05 kDa).

Lane 2: Non-transfected lysate.