



Datasheet for ABIN1327382
anti-INS-IGF2 antibody (AA 1-200)



[Go to Product page](#)

1 Image

2 Publications

Overview

Quantity:	50 µg
Target:	INS-IGF2
Binding Specificity:	AA 1-200
Reactivity:	Human
Host:	Mouse
Clonality:	Polyclonal
Application:	Western Blotting (WB)

Product Details

Purpose:	Mouse polyclonal antibody raised against a full-length human INS-IGF2 protein.
Immunogen:	INS-IGF2 (AAI53084.1, 1 a.a. ~ 200 a.a) full-length human protein.
Sequence:	MALWMRLLPL LALLALWGPD PAAAFVNQHL CGSHLVEALY LVCGERGFFY TPKTRREAED LQASALSLSS STSTWPEGLD ATARAPPALV VTANIGQAGG SSSRQFRQRA LGTSDSPVLF IHCPGAAGTA QGLE YRGRRV TTELVWEEVD SSPQPQGSSES LPAQPPAQPA PQPEPQQARE PSPEVSCCGL WPRRPQRSQN
Cross-Reactivity:	Human
Characteristics:	Antibody reactive against mammalian transfected lysate.

Target Details

Target:	INS-IGF2
Alternative Name:	INS-IGF2 (INS-IGF2 Products)

Target Details

Background: Full Gene Name: INS-IGF2 readthrough transcript
Synonyms:

Gene ID: 723961

Pathways: [Peptide Hormone Metabolism](#)

Application Details

Application Notes: Optimal working dilution should be determined by the investigator.

Restrictions: For Research Use only

Handling

Buffer: In 1x PBS, pH 7.4

Handling Advice: Aliquot to avoid repeated freezing and thawing.

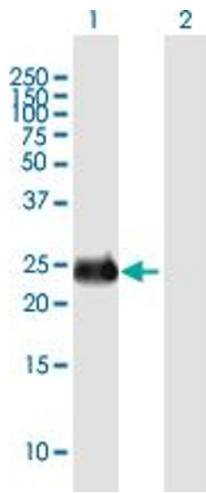
Storage: -20 °C

Storage Comment: Store at -20°C or lower. Aliquot to avoid repeated freezing and thawing.

Publications

Product cited in: Wernersson, Frogne, Rescan, Hansson, Bruun, Grønborg, Jensen, Madsen: "Analysis artefacts of the INS-IGF2 fusion transcript." in: **BMC molecular biology**, Vol. 16, pp. 13, (2015) ([PubMed](#)).

Kanatsuna, Taneera, Vaziri-Sani, Wierup, Larsson, Delli, Skärstrand, Balhuizen, Bennet, Steiner, Törn, Fex, Lernmark: "Autoimmunity against INS-IGF2 protein expressed in human pancreatic islets." in: **The Journal of biological chemistry**, Vol. 288, Issue 40, pp. 29013-23, (2013) ([PubMed](#)).



Western Blotting

Image 1. Western Blot analysis of INS-IGF2 expression in transfected 293T cell line by INS-IGF2 MaxPab polyclonal antibody.

Lane 1: INS-IGF2 transfected lysate(22 KDa).

Lane 2: Non-transfected lysate.