



[Go to Product page](#)

Datasheet for ABIN1327383
anti-SOCS1 antibody (AA 1-211)

1 Image

Overview

Quantity:	50 µg
Target:	SOCS1
Binding Specificity:	AA 1-211
Reactivity:	Human
Host:	Mouse
Clonality:	Polyclonal
Conjugate:	This SOCS1 antibody is un-conjugated
Application:	Western Blotting (WB)

Product Details

Purpose:	Mouse polyclonal antibody raised against a full-length human SOCS1 protein.
Immunogen:	SOCS1 (AAI53089.1, 1 a.a. ~ 211 a.a) full-length human protein.
Sequence:	MVAHNQVAAD NAVSTAAEPR RRPEPSSSSS SSPAAPARPR PCPAVPAPAP GDTHFRTRFRS HADYRRITRA SALLDACGFY WGPLSVHGAH ERLRAEPVGT FLVRDSRQRN CFFALSVKMA SGPTSIRVHF QAGRFDLDGS RESFDCLFEL LEHYVAAPRR MLGAPLRQRR VRPLQELCRQ RIVATVGREN LARIPLNPVL RDYLSSFPFQ I
Cross-Reactivity:	Human
Characteristics:	Antibody reactive against mammalian transfected lysate.

Target Details

Target:	SOCS1
---------	-------

Target Details

Alternative Name:	SOCS1 (SOCS1 Products)
Background:	Full Gene Name: suppressor of cytokine signaling 1 Synonyms: CIS1,CISH1,JAB,SOCS-1,SSI-1,SSI1,TIP3
Gene ID:	8651
Pathways:	JAK-STAT Signaling , Interferon-gamma Pathway , TLR Signaling , Response to Growth Hormone Stimulus

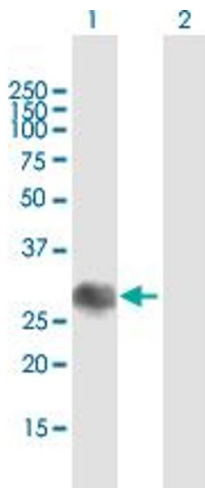
Application Details

Application Notes:	Optimal working dilution should be determined by the investigator.
Restrictions:	For Research Use only

Handling

Buffer:	In 1x PBS, pH 7.4
Handling Advice:	Aliquot to avoid repeated freezing and thawing.
Storage:	-20 °C
Storage Comment:	Store at -20°C or lower. Aliquot to avoid repeated freezing and thawing.

Images



Western Blotting

Image 1. Western Blot analysis of SOCS1 expression in transfected 293T cell line by SOCS1 MaxPab polyclonal antibody.

Lane 1: SOCS1 transfected lysate(23.21 KDa).

Lane 2: Non-transfected lysate.