

Datasheet for ABIN1327401
anti-PADI6 antibody (AA 1-694)



[Go to Product page](#)

2 Images

Overview

Quantity:	50 µg
Target:	PADI6
Binding Specificity:	AA 1-694
Reactivity:	Human
Host:	Mouse
Clonality:	Polyclonal
Conjugate:	This PADI6 antibody is un-conjugated
Application:	Western Blotting (WB)

Product Details

Purpose:	Mouse polyclonal antibody raised against a full-length human PADI6 protein.
Immunogen:	PADI6 (AAI53198.1, 1 a.a. ~ 694 a.a) full-length human protein.
Sequence:	<p>MVSVEGRAMS FQSIHLSLD SPVHAVCVLG TEICLDLSGC APQKCQCFTI HGSGRVLIDV ANTVISEKED ATIWWPLSDP TYATVKMTSP SPSVDADKVS VTTYGNEDA PVGTAVLYLT GIEVSLEVDI YRNGQVEMSS DKQAKKKWIW GPSGWGAILL VNCNPADVGQ QLEDKKTKKV IFSEEITNLS QMTLNVQGPS CILKKYRLVL HTSKEESKKA RVYWPQKDNS STFELVLGPD QHAYTLALLG NHLKETFYVE AIAFPSAEFS GLISYSVSLV EESQDPSIPE TVLYKDTVWF RVAPCVFIPC TQVPLEVYLC RELQLQGFVD TVTKLSEKSN SQVASVYEDP NRLGRWLQDE MAFCYTQAPH KTTSLILDTP QAADLDEFPM KYSLSPGIGY MIQDTEHKV ASMDSIGNLM VSPPVKVQGK EYPLGRVLIG SSFYPSAEGR AMSKTLRDFL YAQQVQAPVE LYSDWLMTGH VDEFMCFIPT DDKNEGKKGK LLLASPSAC YKLFREKQKE GYGDALLFDE LRADQLLSNG REAKTIDQLL ADESLKKQNE YVEKCIHLNR DILKTELGLV EQDIIIPQL FCLEKLTNIP</p>

Product Details

SDQQPKRSFA RPYFPDLLRM IVMGKNLGIP KPFGPQIKGT CCLEEKICCL LEPLGFKCTF
INDFDCYLTE VGDICACANI RRVPFQFKWW KMVP

Cross-Reactivity: Human

Characteristics: Antibody reactive against mammalian transfected lysate.

Target Details

Target: PADI6

Alternative Name: PADI6 ([PADI6 Products](#))

Background: Full Gene Name: peptidyl arginine deiminase, type VI

Synonyms:

Gene ID: 353238

Application Details

Application Notes: Optimal working dilution should be determined by the investigator.

Restrictions: For Research Use only

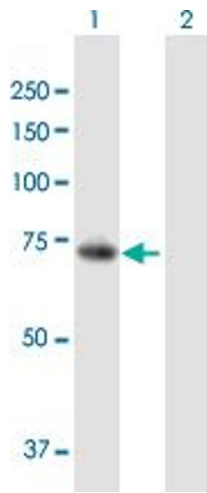
Handling

Buffer: In 1x PBS, pH 7.4

Handling Advice: Aliquot to avoid repeated freezing and thawing.

Storage: -20 °C

Storage Comment: Store at -20°C or lower. Aliquot to avoid repeated freezing and thawing.

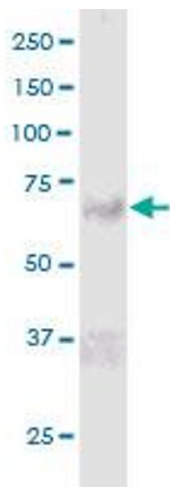


Western Blotting

Image 1. Western Blot analysis of PADI6 expression in transfected 293T cell line by PADI6 MaxPab polyclonal antibody.

Lane 1: PADI6 transfected lysate(76.34 KDa).

Lane 2: Non-transfected lysate.



Western Blotting

Image 2. PADI6 MaxPab polyclonal antibody. Western Blot analysis of PADI6 expression in human placenta.