

Datasheet for ABIN1327404  
**anti-WTH3DI antibody (AA 1-254)**



[Go to Product page](#)

1 Image

## Overview

Quantity:	50 µg
Target:	WTH3DI
Binding Specificity:	AA 1-254
Reactivity:	Human
Host:	Mouse
Clonality:	Polyclonal
Conjugate:	This WTH3DI antibody is un-conjugated
Application:	Western Blotting (WB)

## Product Details

Purpose:	Mouse polyclonal antibody raised against a full-length human LOC150786 protein.
Immunogen:	LOC150786 (AAI53206.1, 1 a.a. ~ 254 a.a) full-length human protein.
Sequence:	MSAGGDFGNP LRFKFLVFLG EQSVAKTSLI TRFRYDSFDN TYQAIIGIDF LSKTMYLEDG TIGLRLWDTA GQERLRSLIP RYIRDSAAAV VVYDITNVNS FQQTTKWIDD VRTEGGSDVI ITLVGNKTDL ADKRQVSIEE GERKAKGLNV TFIETRAKAG YNVKQLFRRV AAALPGMEST QDGSREDMSD IKLEKPQEQT VSEGGCSCYS PMSSSTLPQK PPYSFIDCSV NIGLNLFPSL ITFCNSSLLP VSWR
Cross-Reactivity:	Human
Characteristics:	Antibody reactive against mammalian transfected lysate.

## Target Details

Target:	WTH3DI
Abstract:	<a href="#">WTH3DI Products</a>
Background:	Full Gene Name: RAB6C-like Synonyms: WTH3DI
Gene ID:	150786

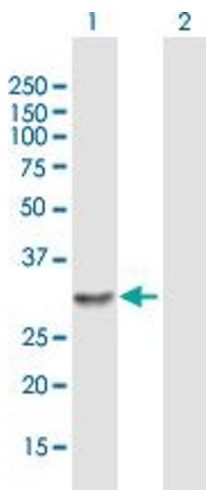
## Application Details

Application Notes:	Optimal working dilution should be determined by the investigator.
Restrictions:	For Research Use only

## Handling

Buffer:	In 1x PBS, pH 7.4
Handling Advice:	Aliquot to avoid repeated freezing and thawing.
Storage:	-20 °C
Storage Comment:	Store at -20°C or lower. Aliquot to avoid repeated freezing and thawing.

## Images



### Western Blotting

**Image 1.** Western Blot analysis of LOC150786 expression in transfected 293T cell line by LOC150786 MaxPab polyclonal antibody.

Lane 1: LOC150786 transfected lysate(27.94 KDa).

Lane 2: Non-transfected lysate.