



[Go to Product page](#)

Datasheet for ABIN1327410  
**anti-SHISA6 antibody (AA 1-292)**

1 Image

Overview

Quantity:	50 µg
Target:	SHISA6
Binding Specificity:	AA 1-292
Reactivity:	Human
Host:	Mouse
Clonality:	Polyclonal
Conjugate:	This SHISA6 antibody is un-conjugated
Application:	Western Blotting (WB)

Product Details

Purpose:	Mouse polyclonal antibody raised against a full-length human FLJ45455 protein.
Immunogen:	FLJ45455 (AAI56587.1, 1 a.a. ~ 292 a.a) full-length human protein.
Sequence:	MNIHRALADI LRQQGPIPIA HCERETISAI DTSPKENTPV RSSSKNHYP VRTAKQTPEK PRMNNILTA TEPYDLSFSR SFQNLHLPP SYESAVKTNP SKYSSLKRLT DKEADEYYMR RRHLPLAAR GTLPLNVIQM SQQKPLPRER PRRPIRAMSQ DRVLS PDRGL PDEF SMPYDR ILSDEQLLST ERLHSQDPLL SPERTAFPEQ SLSRAISHTD V FVSTPVLDR YRMSKMHSH P SASNNSYATL GQSQTAAKRH AFASRRHNTV EQLHYIPGHH TCYTASKTEV TV
Cross-Reactivity:	Human
Characteristics:	Antibody reactive against mammalian transfected lysate.

## Target Details

Target:	SHISA6
Abstract:	<a href="#">SHISA6 Products</a>
Background:	Full Gene Name: FLJ45455 protein Synonyms:
Gene ID:	388336

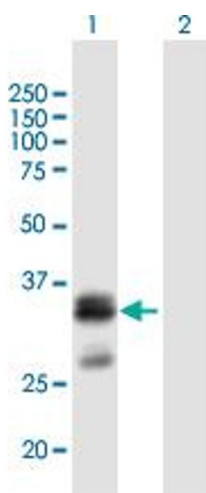
## Application Details

Application Notes:	Optimal working dilution should be determined by the investigator.
Restrictions:	For Research Use only

## Handling

Buffer:	In 1x PBS, pH 7.4
Handling Advice:	Aliquot to avoid repeated freezing and thawing.
Storage:	-20 °C
Storage Comment:	Store at -20°C or lower. Aliquot to avoid repeated freezing and thawing.

## Images



### Western Blotting

**Image 1.** Western Blot analysis of FLJ45455 expression in transfected 293T cell line by FLJ45455 MaxPab polyclonal antibody.

Lane 1: FLJ45455 transfected lysate(32.12 KDa).

Lane 2: Non-transfected lysate.