



[Go to Product page](#)

Datasheet for ABIN1327428  
**anti-GBX1 antibody (AA 1-363)**

2 Images

Overview

Quantity:	50 µg
Target:	GBX1
Binding Specificity:	AA 1-363
Reactivity:	Human
Host:	Mouse
Clonality:	Polyclonal
Conjugate:	This GBX1 antibody is un-conjugated
Application:	Western Blotting (WB)

Product Details

Purpose:	Mouse polyclonal antibody raised against a full-length human GBX1 protein.
Immunogen:	GBX1 (AAI60003.1, 1 a.a. ~ 363 a.a) full-length human protein.
Sequence:	MQRAGGGSAP GGNGGGGGGG PGTAFSIDSL IGPPPPRSGH LLYTGYPMFM PYRPLVLPQA LAPAPLPAGL PPLAPLASFA GRLTNTFCAG LGQAVPSMVA LTTALPSFAE PPDAFYGPQE LAAAAAAAAA TAARNNPEPG GRRPEGGLEA DELLPAREKV AEPPIPPPPH FSETFPSLPA EGKVYSSDEE KLEASAGDPA GSEQEEEGSG GDSRDDGFLD SSAGGPGALL GPKPKLKGSL GTGAEEGAPV TAGVTAPGGK SRRRRTAFTS EQLLELEKEF HCKKYLSTL RSQIAHALKL SEVQVKIWFQ NRRAKWKRIK AGNVSSRSGE PVRNPKIVVP IPVHVNRFAV RSQHQQMEQG ARP
Cross-Reactivity:	Human
Characteristics:	Antibody reactive against mammalian transfected lysate.

## Target Details

Target:	GBX1
Alternative Name:	GBX1 ( <a href="#">GBX1 Products</a> )
Background:	Full Gene Name: gastrulation brain homeobox 1 Synonyms:
Gene ID:	2636

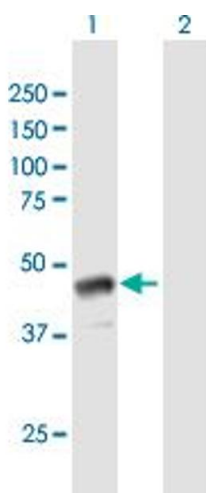
## Application Details

Application Notes:	Optimal working dilution should be determined by the investigator.
Restrictions:	For Research Use only

## Handling

Buffer:	In 1x PBS, pH 7.4
Handling Advice:	Aliquot to avoid repeated freezing and thawing.
Storage:	-20 °C
Storage Comment:	Store at -20°C or lower. Aliquot to avoid repeated freezing and thawing.

## Images

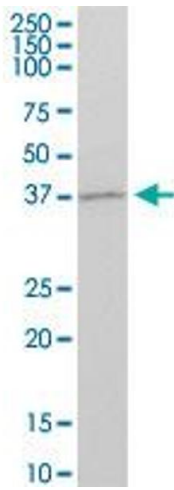


### Western Blotting

**Image 1.** Western Blot analysis of GBX1 expression in transfected 293T cell line by GBX1 MaxPab polyclonal antibody.

Lane 1: GBX1 transfected lysate(39.93 kDa).

Lane 2: Non-transfected lysate.



### Western Blotting

**Image 2.** GBX1 MaxPab polyclonal antibody. Western Blot analysis of GBX1 expression in human kidney.