

Datasheet for ABIN1327433
anti-WTIP antibody (AA 1-430)



[Go to Product page](#)

4 Images

Overview

| | |
|----------------------|--|
| Quantity: | 50 µg |
| Target: | WTIP |
| Binding Specificity: | AA 1-430 |
| Reactivity: | Human |
| Host: | Mouse |
| Clonality: | Polyclonal |
| Conjugate: | This WTIP antibody is un-conjugated |
| Application: | Western Blotting (WB), Immunofluorescence (IF) |

Product Details

| | |
|-------------------|--|
| Purpose: | Mouse polyclonal antibody raised against a full-length human WTIP protein. |
| Immunogen: | WTIP (AAI60027.1, 1 a.a. ~ 430 a.a) full-length human protein. |
| Sequence: | <p>MQRSRAGADE AALLLAGLAL RELEPGCGSP GRGRRGPRPG PGDEAAPALG RRGKGS GGPE AGADGLSRGE RGPRAAVPE LSAQPAGSPR ASLAGSDGGG GG SARSSGI SLGYDQRHGS PRSGRSDPRP GPGPPSVGSA RSSVSSLGSR GSAGAYADFL PPGACPAPAR SPEPAGPAPF PLPALPLPPG REGGPSAAER RLEALTRELE RALEARTARD YFGICIKCGL GIYGAQQACQ AMGSLYHTDC FTCDSCGRRL RGKAFYNVGE KVCYQEDFLY SGFQQTADKC SVCGHLIMEM ILQALGKSYH PGCFRCSVCN ECLDGVPTV DVENNIYCVR DYHTVFAPKC ASCARPILPA QGCEITIRVV SMDRDYHVAC YHCEDCGLQL SGEEGRRCYP LAGHLLCRRR HLRLRQPGL PSPTVHVTEL</p> |
| Cross-Reactivity: | Human, Rat |

Product Details

Characteristics: Antibody reactive against mammalian transfected lysate.

Target Details

Target: WTIP

Alternative Name: WTIP ([WTIP Products](#))

Background: Full Gene Name: Wilms tumor 1 interacting protein
Synonyms:

Gene ID: 126374

Application Details

Application Notes: Optimal working dilution should be determined by the investigator.

Restrictions: For Research Use only

Handling

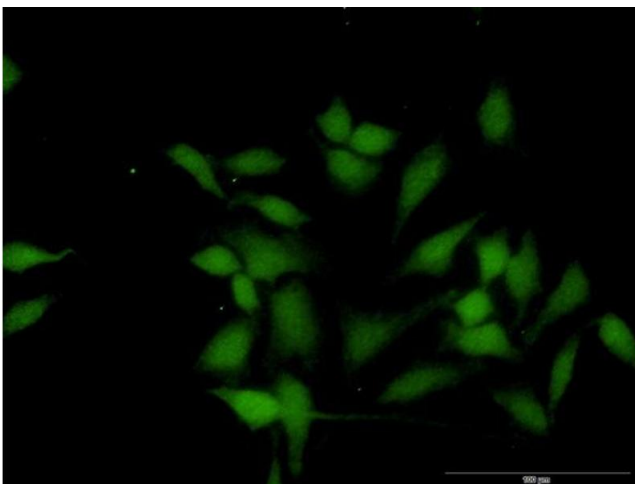
Buffer: In 1x PBS, pH 7.4

Handling Advice: Aliquot to avoid repeated freezing and thawing.

Storage: -20 °C

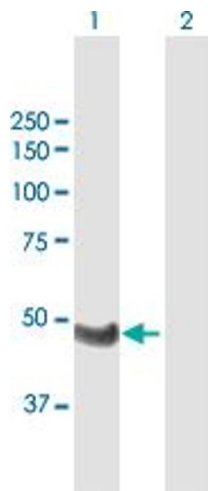
Storage Comment: Store at -20°C or lower. Aliquot to avoid repeated freezing and thawing.

Images



Immunofluorescence

Image 1. Immunofluorescence of purified MaxPab antibody to WTIP on HeLa cell. [antibody concentration 40 ug/ml]

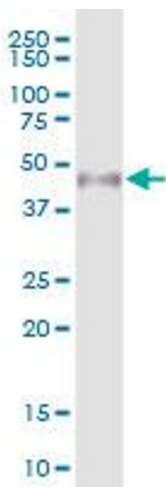


Western Blotting

Image 2. Western Blot analysis of WTIP expression in transfected 293T cell line by WTIP MaxPab polyclonal antibody.

Lane 1: WTIP transfected lysate(47.3 kDa).

Lane 2: Non-transfected lysate.



Western Blotting

Image 3. WTIP MaxPab polyclonal antibody. Western Blot analysis of WTIP expression in human placenta.

Please check the [product details page](#) for more images. Overall 4 images are available for ABIN1327433.