



[Go to Product page](#)

Datasheet for ABIN1327435
anti-HMX1 antibody (AA 1-348)

2 Images

Overview

Quantity:	50 µg
Target:	HMX1
Binding Specificity:	AA 1-348
Reactivity:	Human
Host:	Mouse
Clonality:	Polyclonal
Conjugate:	This HMX1 antibody is un-conjugated
Application:	Western Blotting (WB)

Product Details

Purpose:	Mouse polyclonal antibody raised against a full-length human HMX1 protein.
Immunogen:	HMX1 (AAI60031.1, 1 a.a. ~ 348 a.a) full-length human protein.
Sequence:	MPDELTEPGR ATPARASSFL IENLLAAEAK GAGRATQGDG SREDEEEDDD DPEDEDAEQA RRRRLQRRRQ LLAGTGPGGE ARARALLGPG ALGLGPRPPP GPGPPFALGC GGAARWYPRA HGGYGGGLSP DTSRDRSPET GEEMGRAEGA WPRGPGPGAV QREAAELAAR GPAAGTEEAS ELAEVPAAAG ETRGGVGVGG GRKKKTRTVF SRSQVFQLES TFDLKRYLSS AERAGLAASL QLTETQVKIW FQNRRNKWKR QLAAELEAAS LSPPGAQRLV RVPVLYHESP PAAAAAGPPA TLPFPLAPAA PAPPPLLGF SGALAYPLAA FPAASVPFL RAQMPGLV
Cross-Reactivity:	Human
Characteristics:	Antibody reactive against mammalian transfected lysate.

Target Details

Target:	HMX1
Alternative Name:	HMX1 (HMX1 Products)
Background:	Full Gene Name: H6 family homeobox 1 Synonyms: H6,NKX5-3
Gene ID:	3166

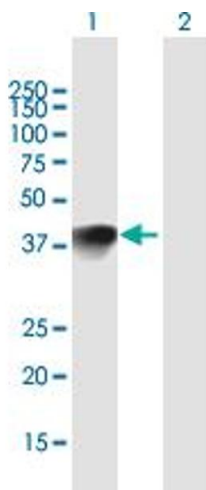
Application Details

Application Notes:	Optimal working dilution should be determined by the investigator.
Restrictions:	For Research Use only

Handling

Buffer:	In 1x PBS, pH 7.4
Handling Advice:	Aliquot to avoid repeated freezing and thawing.
Storage:	-20 °C
Storage Comment:	Store at -20°C or lower. Aliquot to avoid repeated freezing and thawing.

Images

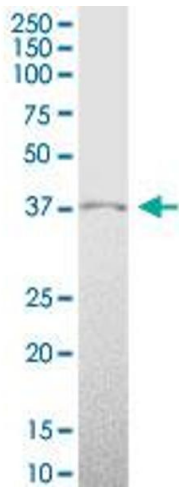


Western Blotting

Image 1. Western Blot analysis of HMX1 expression in transfected 293T cell line by HMX1 MaxPab polyclonal antibody.

Lane 1: HMX1 transfected lysate(38.28 KDa).

Lane 2: Non-transfected lysate.



Western Blotting

Image 2. HMX1 MaxPab polyclonal antibody. Western Blot analysis of HMX1 expression in human kidney.