



[Go to Product page](#)

Datasheet for ABIN1327439  
**anti-C1QL3 antibody (AA 1-255)**

1 Image

Overview

Quantity:	50 µg
Target:	C1QL3
Binding Specificity:	AA 1-255
Reactivity:	Human
Host:	Mouse
Clonality:	Polyclonal
Conjugate:	This C1QL3 antibody is un-conjugated
Application:	Western Blotting (WB)

Product Details

Purpose:	Mouse polyclonal antibody raised against a full-length human C1QL3 protein.
Immunogen:	C1QL3 (AAI60038.1, 1 a.a. ~ 255 a.a) full-length human protein.
Sequence:	MVLLLVILIP VLVSSAGTSA HYEMLGTCRM VCDPYGGTKA PSTAATPDRG LMQSLPTFIQ GPKGEAGRPG KAGPRGPPGE PGPPGPMGPP GEKGEPGRQG LPGPPGAPGL NAAGAISAAAT YSTVPKIAFY AGLKRQHEGY EVLKFDDVVT NLGNHYDPTT GKFTCSIPGI YFFTYHVLMR GGDGTSMWAD LCKNNQVRAS AIAQDADQNY DYASNSVVLH LEPGDEVYIK LDGGKAHGGN NNKYSTFSGF IYAD
Cross-Reactivity:	Human
Characteristics:	Antibody reactive against mammalian transfected lysate.

## Target Details

Target:	C1QL3
Alternative Name:	C1QL3 ( <a href="#">C1QL3 Products</a> )
Background:	Full Gene Name: complement component 1, q subcomponent-like 3 Synonyms: C1qI,K100
Gene ID:	389941

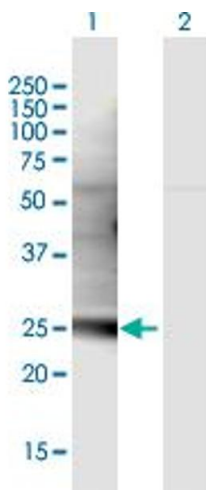
## Application Details

Application Notes:	Optimal working dilution should be determined by the investigator.
Restrictions:	For Research Use only

## Handling

Buffer:	In 1x PBS, pH 7.4
Handling Advice:	Aliquot to avoid repeated freezing and thawing.
Storage:	-20 °C
Storage Comment:	Store at -20°C or lower. Aliquot to avoid repeated freezing and thawing.

## Images



### Western Blotting

**Image 1.** Western Blot analysis of C1QL3 expression in transfected 293T cell line by C1QL3 MaxPab polyclonal antibody.

Lane 1: C1QL3 transfected lysate(28.05 KDa).

Lane 2: Non-transfected lysate.