



[Go to Product page](#)

Datasheet for ABIN1327454
anti-EGFL6 antibody (AA 1-553)

1 Image

Overview

Quantity:	50 µg
Target:	EGFL6
Binding Specificity:	AA 1-553
Reactivity:	Human
Host:	Mouse
Clonality:	Polyclonal
Conjugate:	This EGFL6 antibody is un-conjugated
Application:	Western Blotting (WB)

Product Details

Purpose:	Mouse polyclonal antibody raised against a full-length human EGFL6 protein.
Immunogen:	EGFL6 (ABM81864.1, 1 a.a. ~ 553 a.a) full-length human protein.
Sequence:	MPLPWSLALP LLLSWVAGGF GNAASARHHG LLASARQPGV CHYGTKLACC YGWRRNNSKGV CEATCEPGCK FGECVGPNC RCFPGYTGKT CSQDVNECGM KPRPCQHRCV NTHGSYKCF LSGHMLMPDA TCVNSRTCAM INCQYSCEDT EEGPQCLCPS SGLRLAPNGR DCLDIDECAS GKVICPYNRR CVNTFGSYYC KCHIGFELQY ISGRYDCIDI NECTMDSHTC SHHANCFTQ GSFKCKCKQG YKGNGLRCSA IPENSVKEVL RAPGTIKDRI KLLAHKNSM KKKAKIKNVT PEPTRTPPK VNLQPFNYEE IVSRGGNSHG GKKGNEEKMK EGLEDEKREE KALKNDIEER SLRGDVFFPK VNEAGEFGLI LVQRKALTSK LEHKDLNISV DCSFNHGICD WKQDREDDFD WNPADRDAI GFYMAVPALA GHKKDIGRLK LLLPDLQPQS NFCLLDYRL AGDKVGLR FVKNSNNALA WEKTTSEDEK WKTGKIQLYQ GTDATKSIIF EAERGKGTG EIAVDGULLV SGLCPDLSLLS VDD

Product Details

Cross-Reactivity:	Human
Characteristics:	Antibody reactive against mammalian transfected lysate.

Target Details

Target:	EGFL6
Alternative Name:	EGFL6 (EGFL6 Products)
Background:	Full Gene Name: EGF-like-domain, multiple 6 Synonyms: DKFZp564P2063,MAEG,W80
Gene ID:	25975

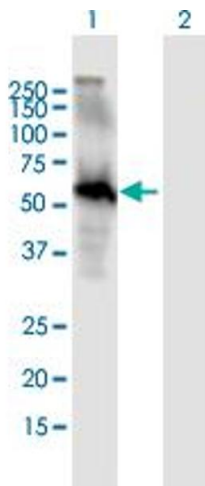
Application Details

Application Notes:	Optimal working dilution should be determined by the investigator.
Restrictions:	For Research Use only

Handling

Buffer:	In 1x PBS, pH 7.4
Handling Advice:	Aliquot to avoid repeated freezing and thawing.
Storage:	-20 °C
Storage Comment:	Store at -20°C or lower. Aliquot to avoid repeated freezing and thawing.

Images



Western Blotting

Image 1. Western Blot analysis of EGFL6 expression in transfected 293T cell line by EGFL6 MaxPab polyclonal antibody.

Lane 1: EGFL6 transfected lysate(60.83 KDa).

Lane 2: Non-transfected lysate.