

Datasheet for ABIN1327462  
**anti-SSB antibody (AA 1-408)**



[Go to Product page](#)

2 Images

Overview

Quantity:	50 µg
Target:	SSB
Binding Specificity:	AA 1-408
Reactivity:	Human
Host:	Mouse
Clonality:	Polyclonal
Conjugate:	This SSB antibody is un-conjugated
Application:	Western Blotting (WB), Immunofluorescence (IF)

Product Details

Purpose:	Mouse polyclonal antibody raised against a full-length human SSB protein.
Immunogen:	SSB (ABM85385.1, 1 a.a. ~ 408 a.a) full-length human protein.
Sequence:	MAENGDNEKM AALEAKICHQ IEYYFGDFNL PRDKFLKEQI KLDEGWVPLE IMIKFNRLNR LTDFNVIVE ALSKSKAELM EISEDKTKIR RSPSKPLPEV TDEYKNDVKN RSVYIKGFPT DATLDDIKEW LEDKGQVLNI QMRRTLHKAF KGSIFVVFDS IESAKKFVET PGQKYKETDL LILFKDDYFA KKNEERKQNK VEAKLRAKQE QEAKQKLEED AEMKSLEEKI GCLLKFSGDL DDQTCREDLH ILFSNHGEIK WIDFVRGAKE GIILFKEKAK EALGKAKDAN NGNLQLRNKE VTWEVLEGEV EKEALKKIIIE DQQESLNKWK SKGRRFKGKG KGNKAAQPGS GKGKVVQFQGK KTKFASDDEH DEHDENGATG PVKRAREETD KEEPASKQQK TENGAGDQ
Cross-Reactivity:	Human
Characteristics:	Antibody reactive against mammalian transfected lysate.

## Target Details

Target:	SSB
Alternative Name:	SSB ( <a href="#">SSB Products</a> )
Background:	Full Gene Name: Sjogren syndrome antigen B (autoantigen La) Synonyms: LARP3,La
Gene ID:	6741

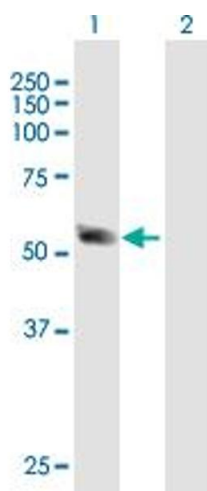
## Application Details

Application Notes:	Optimal working dilution should be determined by the investigator.
Restrictions:	For Research Use only

## Handling

Buffer:	In 1x PBS, pH 7.4
Handling Advice:	Aliquot to avoid repeated freezing and thawing.
Storage:	-20 °C
Storage Comment:	Store at -20°C or lower. Aliquot to avoid repeated freezing and thawing.

## Images

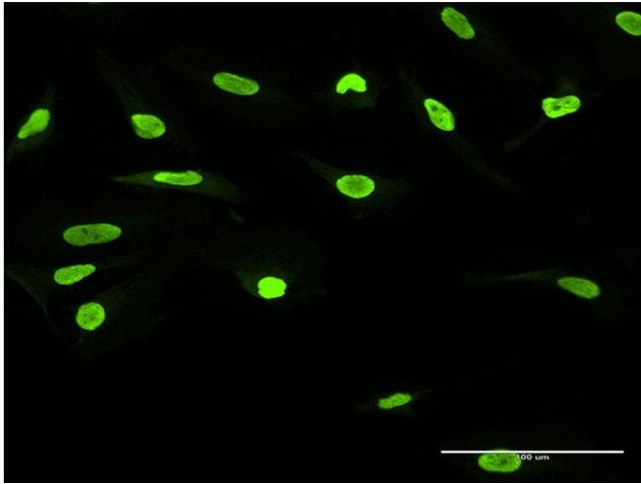


### Western Blotting

**Image 1.** Western Blot analysis of SSB expression in transfected 293T cell line by SSB MaxPab polyclonal antibody.

Lane 1: SSB transfected lysate(44.88 KDa).

Lane 2: Non-transfected lysate.



### Immunofluorescence

**Image 2.** Immunofluorescence of purified MaxPab antibody to SSB on HeLa cell. [antibody concentration 10 ug/ml]