



[Go to Product page](#)

Datasheet for ABIN1327463
anti-GFI1 antibody (AA 1-422)

1 Image

Overview

Quantity:	50 µg
Target:	GFI1
Binding Specificity:	AA 1-422
Reactivity:	Human
Host:	Mouse
Clonality:	Polyclonal
Conjugate:	This GFI1 antibody is un-conjugated
Application:	Western Blotting (WB)

Product Details

Purpose:	Mouse polyclonal antibody raised against a full-length human GFI1 protein.
Immunogen:	GFI1 (ABM85387.1, 1 a.a. ~ 422 a.a) full-length human protein.
Sequence:	MPRSFLVKSK KAHSYHQPRS PGPDYSLRLE NVPAPSRADS TSNAGGAKAE PRDRLSPESQ LTEAPDRASA SPDSCEGSVC ERSSEFEDFW RPPSPSASPA SEKSMCPSLD EAQPFPLPFK PYSWSGLAGS DLRHLVQSYR PCGALERGAG LGLFCEPAPE PGHPAALYGP KRAAGGAGAG APGSCSAGAG ATAGPGLGLY GDFGSAAAGL YERPTAAAGL LYPERGHGLH ADKGAGVKVE SELLCTRLLL GGGSYKCIKC SKVFSTPHGL EVHVRRSHSG TRPFACEMCG KTFGHAVSLE QHKAVHSQER SFDCKICGKS FKRSTLSTH LLIHSDTRPY PCQYCGKRFH QKSDMKKHTF IHTGEKPHKC QVCGKAFSQS SNLITHSRKH TGFKPFGCDL CGKGFQRKVD LRRHRETQHG LK
Cross-Reactivity:	Human
Characteristics:	Antibody reactive against mammalian transfected lysate.

Target Details

Target:	GF11
Alternative Name:	GF11 (GF11 Products)
Background:	Full Gene Name: growth factor independent 1 transcription repressor Synonyms: FLJ94509,GFI-1,ZNF163
Gene ID:	2672

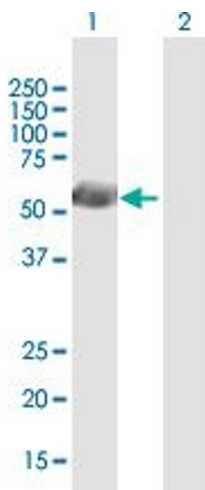
Application Details

Application Notes:	Optimal working dilution should be determined by the investigator.
Restrictions:	For Research Use only

Handling

Buffer:	In 1x PBS, pH 7.4
Handling Advice:	Aliquot to avoid repeated freezing and thawing.
Storage:	-20 °C
Storage Comment:	Store at -20°C or lower. Aliquot to avoid repeated freezing and thawing.

Images



Western Blotting

Image 1. Western Blot analysis of GF11 expression in transfected 293T cell line by GF11 MaxPab polyclonal antibody.

Lane 1: GF11 transfected lysate(46.42 KDa).

Lane 2: Non-transfected lysate.