



[Go to Product page](#)

Datasheet for ABIN1327466  
**anti-ARHGEF2 antibody (AA 1-959)**

1 Image

Overview

Quantity:	50 µg
Target:	ARHGEF2
Binding Specificity:	AA 1-959
Reactivity:	Human
Host:	Mouse
Clonality:	Polyclonal
Conjugate:	This ARHGEF2 antibody is un-conjugated
Application:	Western Blotting (WB)

Product Details

Purpose:	Mouse polyclonal antibody raised against a full-length human ARHGEF2 protein.
Immunogen:	ARHGEF2 (ABM85604.1, 1 a.a. ~ 959 a.a) full-length human protein.
Sequence:	MKEAKDARYT NGHLFTTISV SGMTMCYACN KSITAKEALI CPTCNVTIHN RCKDTLANCT KVKQKQQKAA LLKNNTALQS VSLRSKTTIR ERPSSAIYPS DSFRQSLGSRGRSSLSLA KSVSTTNIAG HFNDESPLGL RRILSQSTDS LNMRNRTL SV ESLIDEAEVI YSELMDSFEM DEKDFAADSW SLAVDSSFLQ QHKKEVMKQQ DVIYELIQTE LHHVRTLKIM TRLFRTGMLE ELHLEPGVVQ GLFPCVDELS DIHTRFLSQL LERRRQALCP GSTRNFVIHR LGDLLISQFS GPSAEQMCKT YSEFCSRHSK ALKLYKELYA RDKRFQQFIR KVTRPAVLKR HGVQECILLV TQRITKYPLL ISRILQSHG IEEERQDLTT ALGLVKELLS NVDEGIYQLE KGARLQEIYN RMDPRAQTPV PGKGPFGREE LLRRKLIHDG CLLWKTATGR FKDVLVLLMT DVLVFLQEKD QKYIFPTLDK PSVVSLQNLI VRDIANQKEG MFLISAAPPE MYEVHTASRD DRSTWIRVIQ QSVRTCPSRE DFPLIETEDE AYLRRIKMEL QQKDRALVEL LREKVGLFAE MTHFQAEEDG

## Product Details

---

GSGMALPTLP RGLFRSESLE SPRGERLLQD AIREVEGLKD LLVGPVVELL LTPREPALPL  
EPDSGGNTSP GVTANGEART FNGSIELCRA DSDSSQRDRN GNQLRSPQEE ALQRLVNLYG  
LLHGLQAAVA QQDTLMEARF PEGPERREKL CRANSRDGEA GRAGAAPVAP EKQATELALL  
QRQHALLQEE LRRCRRLGEE RATEAGSLEA RLRESEQARA LLEREAEEAR RQLAALGQTE  
PLPAEAPWAR RPVDPRRRSL PAGDALYLSF NPPQPSRGTD RLDLPVTTRS VHRNFEDRER  
QELGSPEERL QDSSDPDTGS EEEGSSRLSP PHSPRDFTRM QDIPEETESR DGEAVASES

Cross-Reactivity: Human

Characteristics: Antibody reactive against mammalian transfected lysate.

## Target Details

---

Target: ARHGEF2

Alternative Name: ARHGEF2 ([ARHGEF2 Products](#))

Background: Full Gene Name: rho/rac guanine nucleotide exchange factor (GEF) 2  
Synonyms: DKFZp547L106,DKFZp547P1516,GEF,GEF-H1,GEFH1,KIAA0651,LFP40,P40

Gene ID: 9181

Pathways: [Negative Regulation of intrinsic apoptotic Signaling](#)

## Application Details

---

Application Notes: Optimal working dilution should be determined by the investigator.

Restrictions: For Research Use only

## Handling

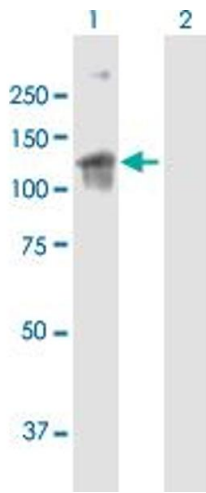
---

Buffer: In 1x PBS, pH 7.4

Handling Advice: Aliquot to avoid repeated freezing and thawing.

Storage: -20 °C

Storage Comment: Store at -20°C or lower. Aliquot to avoid repeated freezing and thawing.



### Western Blotting

**Image 1.** Western Blot analysis of ARHGEF2 expression in transfected 293T cell line by ARHGEF2 MaxPab polyclonal antibody.

Lane 1: ARHGEF2 transfected lysate(105.49 KDa).

Lane 2: Non-transfected lysate.