



[Go to Product page](#)

Datasheet for ABIN1327478
anti-Gephyrin antibody (AA 1-769)

1 Image

Overview

Quantity:	50 µg
Target:	Gephyrin (GPHN)
Binding Specificity:	AA 1-769
Reactivity:	Human
Host:	Mouse
Clonality:	Polyclonal
Conjugate:	This Gephyrin antibody is un-conjugated
Application:	Western Blotting (WB)

Product Details

Purpose:	Mouse polyclonal antibody raised against a full-length human GPHN protein.
Immunogen:	GPHN (ABM86601.1, 1 a.a. ~ 769 a.a) full-length human protein.
Sequence:	MATEGMILTN HDHQIRVGV L TVSDSCFRNL AEDRSGINLK DLVQDPSLLG GTISAYKIVP DEIEEIKETL IDWCDEKELN LILTTGGTGF APRDVTPEAT KEVIEREAPG MALAMLMGSL NVTPLGMLSR PVCGIRGKTL IINLPGSKKG SQECFQFILP ALPHAI D LLR DAIVKVKEVH DELEDLPSP P PLSPPPTTS PHKQTEDKGV QCEEEEEEEK DSGVASTEDS SSSHITAAAI AAKKHPFYTS PAVVMAHGEQ PIPGLINYSH HSTDERIPDS IISRGVQVLP RDTASLSTTP SESPRAQATS RLSTASCPTP KVQSRCSSKE NILRASHSAV DITKVARRHR MSPFPLTSMD KAFITVLEMT PVLGTEIINY RDGMGRVLAQ DVYAKDNLPP FPASVKDGYA VRAADGPGDR FIIGESQAGE QPTQTVMPGQ VMRVTTGAPI PCGADAVVQV EDELIRES D DGTEEELEVRI LVQARPGQDI RPIGHDIKRG ECVLAKGTHM GPSEIGLLAT VGVTEVEVNK FPPVAVMSTG NELLNPEDDL LPGKIRDSNR STLLATI QEH GYPTINLGIV GDNPPDLLNA LNEGISRADV

Product Details

IITSGGVSMG EKDYLKQVLD IDLHAQIHFG RVFMKGPLPT TFATLDIDGV RKIIFALPGN
PVSAVVTCLN FVVPALRKMV GILDPRPTII KARLSCDVKL DPRPEYHRCI LTWHHQEPLP
WAQSTGNQMS SRLMSMRSAN GLLMLPPKTE QYVELHKGEV VDVMVIGRL

Cross-Reactivity: Human

Characteristics: Antibody reactive against mammalian transfected lysate.

Target Details

Target: Gephyrin (GPHN)

Alternative Name: GPHN ([GPHN Products](#))

Background: Full Gene Name: gephyrin
Synonyms: GEPH,GPH,GPHRYN,KIAA1385

Gene ID: 10243

Pathways: [Synaptic Membrane](#), [Skeletal Muscle Fiber Development](#)

Application Details

Application Notes: Optimal working dilution should be determined by the investigator.

Restrictions: For Research Use only

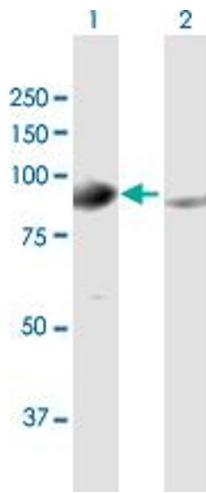
Handling

Buffer: In 1x PBS, pH 7.4

Handling Advice: Aliquot to avoid repeated freezing and thawing.

Storage: -20 °C

Storage Comment: Store at -20°C or lower. Aliquot to avoid repeated freezing and thawing.



Western Blotting

Image 1. Western Blot analysis of GPHN expression in transfected 293T cell line by GPHN MaxPab polyclonal antibody.

Lane 1: GPHN transfected lysate(84.59 KDa).

Lane 2: Non-transfected lysate.