



[Go to Product page](#)

Datasheet for ABIN1327498

## anti-LOC541473 antibody (AA 1-131)

### 2 Images

#### Overview

Quantity:	50 µg
Target:	LOC541473
Binding Specificity:	AA 1-131
Reactivity:	Human
Host:	Mouse
Clonality:	Polyclonal
Conjugate:	This LOC541473 antibody is un-conjugated
Application:	Immunofluorescence (IF), Western Blotting (WB)

#### Product Details

Purpose:	Mouse polyclonal antibody raised against a full-length human LOC541473 protein.
Immunogen:	LOC541473 (NP_001013770.1, 1 a.a. ~ 131 a.a) full-length human protein.
Sequence:	MGGSALNQGVLGDDAPGQS LYERLSQRML DISGDRGVLK DVIREGAGDL VAPDASVLVK YYGYLEHLDR PFDSNYFRKT PRLMKLGEDI TLWGMELGLL SMQRGELARC FVLGKLLDSQ GPSLHLYLRA S
Cross-Reactivity:	Human
Characteristics:	Antibody reactive against mammalian transfected lysate.

#### Target Details

Target:	LOC541473
---------	-----------

## Target Details

Alternative Name:	LOC541473 ( <a href="#">LOC541473 Products</a> )
Background:	Full Gene Name: FK506 binding protein 6, 36 kDa pseudogene Synonyms: MGC88170
Gene ID:	541473
NCBI Accession:	<a href="#">NM_001013748</a>

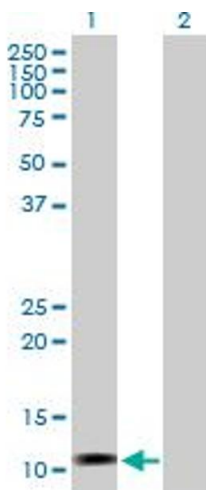
## Application Details

Application Notes:	Optimal working dilution should be determined by the investigator.
Restrictions:	For Research Use only

## Handling

Buffer:	In 1x PBS, pH 7.4
Handling Advice:	Aliquot to avoid repeated freezing and thawing.
Storage:	-20 °C
Storage Comment:	Store at -20°C or lower. Aliquot to avoid repeated freezing and thawing.

## Images

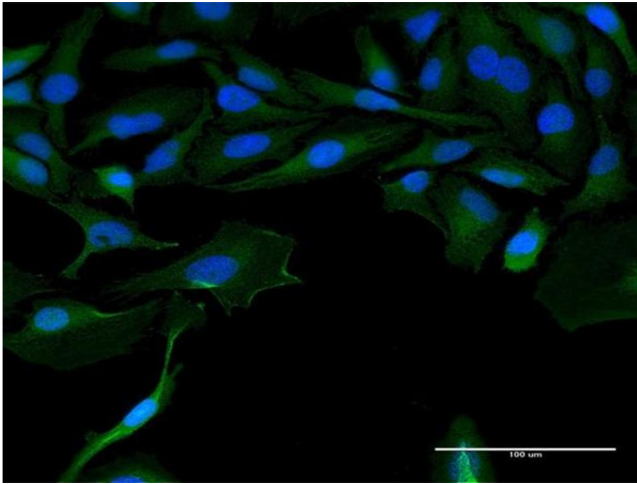


### Western Blotting

**Image 1.** Western Blot analysis of LOC541473 expression in transfected 293T cell line by LOC541473 MaxPab polyclonal antibody.

Lane 1: LOC541473 transfected lysate(14.41 KDa).

Lane 2: Non-transfected lysate.



### Immunofluorescence

**Image 2.** Immunofluorescence of purified MaxPab antibody to LOC541473 on HeLa cell. [antibody concentration 10 ug/ml]