



[Go to Product page](#)

Datasheet for ABIN1327543  
**anti-SLC19A2 antibody (AA 1-497)**

1 Image

Overview

Quantity:	50 µg
Target:	SLC19A2
Binding Specificity:	AA 1-497
Reactivity:	Human
Host:	Mouse
Clonality:	Polyclonal
Conjugate:	This SLC19A2 antibody is un-conjugated
Application:	Western Blotting (WB)

Product Details

Purpose:	Mouse polyclonal antibody raised against a full-length human SLC19A2 protein.
Immunogen:	SLC19A2 (NP_008927.1, 1 a.a. ~ 497 a.a) full-length human protein.
Sequence:	MDVPGPVSRR AAAAAATVLL RTARVRRECW FLPTALLCAY GFFASLRPSE PFLTPYLLGP DKNLTEREVF NEIYPVWTYS YLVLLFPVFL ATDYLRYPKV VLLQGLSLIV TWFMLLYAQG LLAIQFLEFF YGIATATEIA YYSIYSVVD LGMYQKVTSY CRSATLVGFT VGSVLGQILV SVAGWSLFSL NVISLTCVSV AFAVAWFLPM PQKSLFFHHI PSTCQRVNGI KVQNGGIVTD TPASNHLPGW EDIESKIPLN MEEPPVEEPE PKPDRLVLK VLWNDFLMCY SSRPLLCWSV WWALSTCGYF QVVNYTQGLW EKVMPSRYAA IYNGGVEAVS TLLGAVAVFA VGYIKISWST WGEMTSLFSL LLIAAAVYIM DTVGNIWVCY ASYVVFRIY MLLITATFQ IAANLSMERY ALVFGVNTFI ALALQTLTL IVVDASGLGL EITTQFLIYA SYFALIAVVF LASGAVSVMK KCRKLEDPQS SSQVTTTS

## Product Details

---

Cross-Reactivity:	Human
Characteristics:	Antibody reactive against mammalian transfected lysate.

## Target Details

---

Target:	SLC19A2
Alternative Name:	SLC19A2 ( <a href="#">SLC19A2 Products</a> )
Background:	Full Gene Name: solute carrier family 19 (thiamine transporter), member 2 Synonyms: TC1,THT1,THTR1,TRMA
Gene ID:	10560
NCBI Accession:	<a href="#">NM_006996</a>
Pathways:	<a href="#">Dicarboxylic Acid Transport</a>

## Application Details

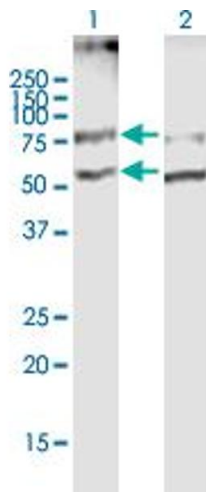
---

Application Notes:	Optimal working dilution should be determined by the investigator.
Restrictions:	For Research Use only

## Handling

---

Buffer:	In 1x PBS, pH 7.4
Handling Advice:	Aliquot to avoid repeated freezing and thawing.
Storage:	-20 °C
Storage Comment:	Store at -20°C or lower. Aliquot to avoid repeated freezing and thawing.



### Western Blotting

**Image 1.** Western Blot analysis of SLC19A2 expression in transfected 293T cell line by SLC19A2 MaxPab polyclonal antibody.

Lane 1: SLC19A2 transfected lysate(55.40 KDa).

Lane 2: Non-transfected lysate.