



Datasheet for ABIN1327550 anti-DIP2C antibody (AA 1-1556)



[Go to Product page](#)

1 Image

Overview

Quantity:	50 µg
Target:	DIP2C
Binding Specificity:	AA 1-1556
Reactivity:	Human
Host:	Mouse
Clonality:	Polyclonal
Conjugate:	This DIP2C antibody is un-conjugated
Application:	Western Blotting (WB)

Product Details

Purpose:	Mouse polyclonal antibody raised against a full-length human DIP2C protein.
Immunogen:	DIP2C (NP_055789.1, 1 a.a. ~ 1556 a.a) full-length human protein.
Sequence:	MADRSLGMA LPLEVRARLA ELELELSEGD ITQKGYEKKR SKLIGAYLPQ PPRVDQALPQ ERRAPVTPSS ASRYHRRRSS GSRDERYRSD VHTEAVQAAL AKHKERKMAV PMPSKRRSLV VQTSMDAYTP PDTSSGSEDE GSVQGDSQGT PTSSQGSINM EHWISQAIHG STTSTTSSSS TQSGGSGAAH RLADVMAQTH IENHSAPPDV TTYTSEHSIQ VERPQGSTGS RTAPKYGNAE LMETGDGVPV SSRVSAKIQQ LVNTLKRPKR PPLREFFVDD FEELLEVQQP DPNQPKPEGA QMLAMRGEQL GVVTNWPPSL EAALQRWGTI SPKAPCLTMM DTNGKPLYIL TYGKLWTRSM KVAYSILHKL GTKQEPMVRP GDRVALVFPN NDPAAFMAAF YGCLLAEVVP VPIEVPLTRK DAGSQQIGFL LGSCGVTVAL TSDACHKGLP KSPTGEIPQF KGWPKLLWFV TESKHLKPP RDWFPHIKDA NNDTAYIEYK TCKDGSVLGV TVTRTALLTH CQALTQACGY TEAETIVNVL DFKKDVGLWH GILTSVMNMM HVISIPYSLM KVNPLSWIQK VCQYKAKVAC VKSRDMHWAL

Product Details

VAHRDQRDIN LSSLRMLIVA DGANPWSISS CDAFLNVFQS KGLRQEVICP CASSPEALTV
AIRRPTDDSN QPPGRGVLSM HGLTYGVIRV DSEEKLSVLT VQDVGLVMPG AIMCSVKPDG
VPQLCRTDEI GELCVCAVAT GTSYYGLSGM TKNTFEVFPM TSSGAPISEY PFIRTGLLGF
VGPGLLVFVW GKMDGLMVVS GRRHNADDIV ATALAVEPMK FVYRGRIAVF SVTVLHDERI
VIVAEQRPDS TEEDSFQWMS RVLQAIDSIH QVGVYCLALV PANTLPKTPL GGIHLSETKQ
LFLEGLHPC NVLMCPHTCV TNLPKPRQKQ PEIGPASVMV GNLVSGKRIA QASGRDLGQI
EDNDQARKFL FLSEVLQWRA QTTPDHILYT LLNCRGAIAN SLTCVQLHKR AEKIAVMLME
RGHLQDGDHV ALVYPPGIDL IAAFYGCXYA GCVPIVTRPP HPQNIATTLP TVKMIVEVSR
SACLMTTQLI CKLLRSREAA AAVDVRTWPL ILDTDDLPPK RPAQICKPCN PDTLAYLDFS
VSTTGMLAGV KMSHAATSAF CRSIKLQCEL YPSREVAICL DPYCGLGFVL WCLCSVYSGH
QSILIPPEL ETNPALWLLA VSQYKVRDTF CSYSVMELCT KGLGSQTESL KARGLDLSRV
RTCVVVAEER PRIALTQSFS KLFKDLGLHP RAVSTSGCR VNLAICLQGT SGPDPPTTVVY
DMRALRHDRV RLVERGSPHS LPLMESGKIL PGVRIIANP ETKGPLGDSH LGEIWHSAH
NASGYFTIYG DESLQSDHFN SRLSFGDTQT IWARTGYLGF LRRELT DAN GERHDALYVW
GALDEAMELR GMRYHPIDIE TSVIRAHKSV TECAVFTWTN LLVVVVELDG SEQEALDLVP
LVTNVVLEEH YLIVGVVVVW DIGVIPINSR GEKQRMHLRD GFLADQLDPI YVAYNM

Cross-Reactivity: Human

Characteristics: Antibody reactive against mammalian transfected lysate.

Target Details

Target: DIP2C

Alternative Name: DIP2C ([DIP2C Products](#))

Background: Full Gene Name: DIP2 disco-interacting protein 2 homolog C (Drosophila)
Synonyms: FLJ34444,FLJ44075,KIAA0934

Gene ID: 22982

NCBI Accession: [NM_014974](#)

Application Details

Application Notes: Optimal working dilution should be determined by the investigator.

Restrictions: For Research Use only

Handling

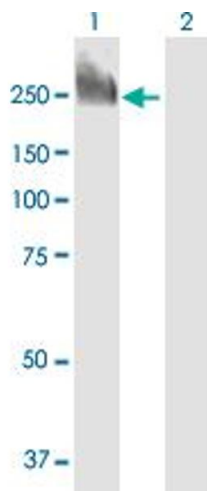
Buffer: In 1x PBS, pH 7.4

Handling Advice: Aliquot to avoid repeated freezing and thawing.

Storage: -20 °C

Storage Comment: Store at -20°C or lower. Aliquot to avoid repeated freezing and thawing.

Images



Western Blotting

Image 1. Western Blot analysis of DIP2C expression in transfected 293T cell line by DIP2C MaxPab polyclonal antibody.

Lane 1: DIP2C transfected lysate(171.16 KDa).

Lane 2: Non-transfected lysate.