



[Go to Product page](#)

Datasheet for ABIN1327551  
**anti-SORCS3 antibody (AA 1-1222)**

1 Image

Overview

Quantity:	50 µg
Target:	SORCS3
Binding Specificity:	AA 1-1222
Reactivity:	Human
Host:	Mouse
Clonality:	Polyclonal
Conjugate:	This SORCS3 antibody is un-conjugated
Application:	Western Blotting (WB)

Product Details

Purpose:	Mouse polyclonal antibody raised against a full-length human SORCS3 protein.
Immunogen:	SORCS3 (NP_055793.1, 1 a.a. ~ 1222 a.a) full-length human protein.
Sequence:	MEARTERPA GRPGAPLVRT GLLLLSTWVL AGAEITWDAT GGPGRPAAPA SRPPALSPLS PRAVASQWPE ELASARRAAV LGRRAGPELL PQQGGGRGGE MQVEAGGTSP AGERRGRGIP APAKLGGARR SRRAQPPITQ ERGDAWATAP ADGSRGSRPL AKGSREEVKA PRAGGSAED LRLPSTSFAL TGDSAHNQAM VHWSGHNSSV ILILTKLYDF NLGSVTESSL WRSTDYGTTY EKLNDKVLK TVLSYLYVNP TNKRKIMLLS DPEMESSILI SSDEGATYQK YRLTFYIQLS LFHPKQEDWV LAYSLDQKLY SSMDFGRRWQ LMHERITPNR FYWSVAGLDK EADLVHMEVR TTDGYAHYLT CRIQECAETT RSGPFARSID ISSLVQDEY IFIQVTTSGR ASYYVSYRRE AFAQIKLPKY SLPKDMHIIS TDENQVFAAV QEWNQNDTYN LYISDTRGIY FTLAMENIKS SRGLMGNIIE ELYEVAGIKG IFLANKKVDD QVKTYITYNK GRDWRLQAP DVDLRGSPVH CLLPFCSLHL HLQISENPYS SGRISSKETA PGLVVATGNI GPELSYTDIG VFISDGGNT

## Product Details

---

WRQIFDEEYN VWFLDWGGAL VAMKHTPLPV RHLWVSFDEG HSWDKYGFST VPLFVDGALV  
EAGMETHIMT VFGHFSLRSE WQLVKVDYKS IFSRHCTKED YQTWHLNQG EPCVMGERKI  
FKKRKPGAQC ALGRDHSGSV VSEPCVCANW DFECDYGYER HGESQCVPF WYNPASPSKD  
CSLGQSYLNS TGYRRIVSNN CTDGLREKYT AKAQMCPGKA PRGLHVTTD GRLVAEQGHN  
ATFIILMEEG DLQRTNIQLD FGDGIAVSYA NFSPIEDGIK HVYKSAGIFQ VTAYAENNLG  
SDTAVLFLHV VCPVEHVHLR VPFVAIRNKE VNISAVVWPS QLGLTYFWW FGNSTKPLIT  
LDSSISFTFL AEGTDTITVQ VAAGNALIQD TKEIAVHEYF QSQLLSFSPN LDYHNPDPIE  
WRKDIGNVIK RALVKVTSVP EDQILIAVFP GLPTSALFI LPPKNLTERR KGNEGDLEQI  
VETLFNALNQ NLVQFELKPG VQVIVYVTQL TLAPLVDSSA GHSSSAMLML LSVFVGLAV  
FLIYKFKRKI PWINIYAQVQ HDKEQEMIGS VSQSENAPKI TLSDFTEPEE LLDKELDTRV  
IGGIATIANS ESTKEIPNCT SV

Cross-Reactivity:	Human
Characteristics:	Antibody reactive against mammalian transfected lysate.

## Target Details

---

Target:	SORCS3
Alternative Name:	SORCS3 ( <a href="#">SORCS3 Products</a> )
Background:	Full Gene Name: sortilin-related VPS10 domain containing receptor 3 Synonyms: SORCS
Gene ID:	22986
NCBI Accession:	<a href="#">NM_014978</a>

## Application Details

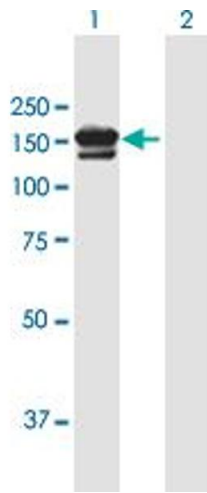
---

Application Notes:	Optimal working dilution should be determined by the investigator.
Restrictions:	For Research Use only

## Handling

---

Buffer:	In 1x PBS, pH 7.4
Handling Advice:	Aliquot to avoid repeated freezing and thawing.
Storage:	-20 °C
Storage Comment:	Store at -20°C or lower. Aliquot to avoid repeated freezing and thawing.



### Western Blotting

**Image 1.** Western Blot analysis of SORCS3 expression in transfected 293T cell line by SORCS3 MaxPab polyclonal antibody.

Lane 1: SORCS3 transfected lysate(134.42 KDa).

Lane 2: Non-transfected lysate.