



[Go to Product page](#)

Datasheet for ABIN1327552
anti-PI15 antibody (AA 1-258)

1 Image

Overview

Quantity:	50 µg
Target:	PI15
Binding Specificity:	AA 1-258
Reactivity:	Human
Host:	Mouse
Clonality:	Polyclonal
Conjugate:	This PI15 antibody is un-conjugated
Application:	Western Blotting (WB)

Product Details

Purpose:	Mouse polyclonal antibody raised against a full-length human PI15 protein.
Immunogen:	PI15 (NP_056970.1, 1 a.a. ~ 258 a.a) full-length human protein.
Sequence:	MIAISAVSSA LLFSSLCEAS TVLLNSTDS SPPTNNFTDI EAALKAQLDS ADIPKARRKR YISQNDMIAI LDYHNQVRGK VFPPAANMEY MVWDENLAKS AEAWAATCIW DHGPSYLLRF LGQNLSVRTG RYRSILQLVK PWYDEVKDYA FPYPQDCNPR CPMRCFGPMC THYTQMVWAT SNRIGCAIHT CQNMNVWGSV WRRAYLVLCN YAPKGNWIGE APYKVGVPSC SCPPSYGGSC TDNLCPFVGT SNLYWFK
Cross-Reactivity:	Human
Characteristics:	Antibody reactive against mammalian transfected lysate.

Target Details

Target:	PI15
Alternative Name:	PI15 (PI15 Products)
Background:	Full Gene Name: peptidase inhibitor 15 Synonyms: CRISP8,DKFZp686F0366,P24TI,P25TI
Gene ID:	51050
NCBI Accession:	NM_015886

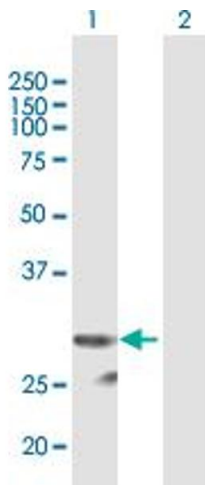
Application Details

Application Notes:	Optimal working dilution should be determined by the investigator.
Restrictions:	For Research Use only

Handling

Buffer:	In 1x PBS, pH 7.4
Handling Advice:	Aliquot to avoid repeated freezing and thawing.
Storage:	-20 °C
Storage Comment:	Store at -20°C or lower. Aliquot to avoid repeated freezing and thawing.

Images



Western Blotting

Image 1. Western Blot analysis of PI15 expression in transfected 293T cell line by PI15 MaxPab polyclonal antibody.

Lane 1: PI15 transfected lysate(28.38 KDa).

Lane 2: Non-transfected lysate.