



[Go to Product page](#)

Datasheet for ABIN1327562
anti-LEFTY1 antibody (AA 1-366)

1 Image

Overview

Quantity:	50 µg
Target:	LEFTY1
Binding Specificity:	AA 1-366
Reactivity:	Human
Host:	Mouse
Clonality:	Polyclonal
Conjugate:	This LEFTY1 antibody is un-conjugated
Application:	Western Blotting (WB)

Product Details

Purpose:	Mouse polyclonal antibody raised against a full-length human LEFTY1 protein.
Immunogen:	LEFTY1 (NP_066277.1, 1 a.a. ~ 366 a.a) full-length human protein.
Sequence:	<p>MQPLWLCWAL WVLPLASPGA ALTGEQLLGS LLRQLQLKEV PTLDRADMEE LVIPTHVRAQ YVALLQRSHG DRSRGRFSQ SFREVAGRFL ALEASTHLLV FGMEQRLPPN SELVQAVLRL FQEPVPKAAL HRHGRLSPRS ARARVTVEWL RVRDDGNSRT SLIDSRLVSV HESGWKAFDV TEAVNFWQQL SRPRQPLLLQ VSVQREHLGP LASGAHKLVR FASQGAPAGL GEPQLELHTL DLGDYGAQGD CDPEAPMTEG TRCCRQEMYI DLQGMKWAEN WVLEPPGFLA YECVGTQRQP PEALAFKWPFLGPRQCIASE TDSLPMIVSI KEGGRTRPQV VSLPNMRVQK CSCASDGALV PRRLQP</p>
Cross-Reactivity:	Human
Characteristics:	Antibody reactive against mammalian transfected lysate.

Target Details

Target:	LEFTY1
Alternative Name:	LEFTY1 (LEFTY1 Products)
Background:	Full Gene Name: left-right determination factor 1 Synonyms: LEFTB,LEFTYB
Gene ID:	10637
NCBI Accession:	NM_020997

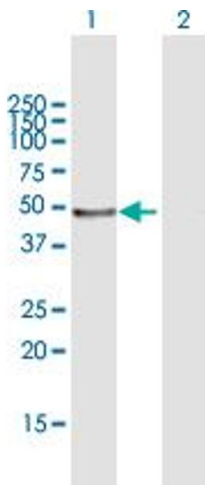
Application Details

Application Notes:	Optimal working dilution should be determined by the investigator.
Restrictions:	For Research Use only

Handling

Buffer:	In 1x PBS, pH 7.4
Handling Advice:	Aliquot to avoid repeated freezing and thawing.
Storage:	-20 °C
Storage Comment:	Store at -20°C or lower. Aliquot to avoid repeated freezing and thawing.

Images



Western Blotting

Image 1. Western Blot analysis of LEFTY1 expression in transfected 293T cell line by LEFTY1 MaxPab polyclonal antibody.

Lane1:LEFTY1 transfected lysate(40.26 KDa).

Lane2:Non-transfected lysate.