



[Go to Product page](#)

Datasheet for ABIN1327573
anti-LOH12CR1 antibody (AA 1-196)

1 Image

Overview

Quantity:	50 µg
Target:	LOH12CR1
Binding Specificity:	AA 1-196
Reactivity:	Human
Host:	Mouse
Clonality:	Polyclonal
Conjugate:	This LOH12CR1 antibody is un-conjugated
Application:	Western Blotting (WB)

Product Details

Purpose:	Mouse polyclonal antibody raised against a full-length human LOH12CR1 protein.
Immunogen:	LOH12CR1 (NP_477517.1, 1 a.a. ~ 196 a.a) full-length human protein.
Sequence:	MGSEQSSEAE SRPNDLNSSV TPSPAKHRAK MDDIVVVAQG SQASRNVSND PDVIKLQEIP TFQPLLKGLL SGQTSPNAK LEKLDSSQVL QLCLRYQDHL HQCAEAVAFD QNALVKRIKE MDLSVETLFS FMQERQKRYA KYAEQIQKVN EMSAILRRIQ MGIDQTVPLL DRLNSMLPEG ERLEPFMSMKP DRELRL
Cross-Reactivity:	Human
Characteristics:	Antibody reactive against mammalian transfected lysate.

Target Details

Target:	LOH12CR1
---------	----------

Target Details

Alternative Name:	LOH12CR1 (LOH12CR1 Products)
Background:	Full Gene Name: loss of heterozygosity, 12, chromosomal region 1 Synonyms: LOH1CR12
Gene ID:	118426
NCBI Accession:	NM_058169

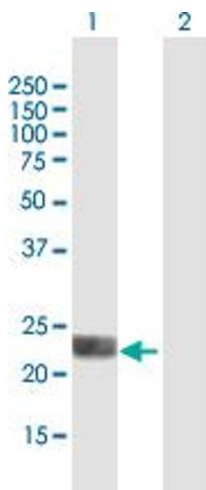
Application Details

Application Notes:	Optimal working dilution should be determined by the investigator.
Restrictions:	For Research Use only

Handling

Buffer:	In 1x PBS, pH 7.4
Handling Advice:	Aliquot to avoid repeated freezing and thawing.
Storage:	-20 °C
Storage Comment:	Store at -20°C or lower. Aliquot to avoid repeated freezing and thawing.

Images



Western Blotting

Image 1. Western Blot analysis of LOH12CR1 expression in transfected 293T cell line by LOH12CR1 MaxPab polyclonal antibody.

Lane 1: LOH12CR1 transfected lysate(21.56 KDa).

Lane 2: Non-transfected lysate.