



[Go to Product page](#)

Datasheet for ABIN1327574  
**anti-MYEOV2 antibody (AA 1-252)**

1 Image

Overview

Quantity:	50 µg
Target:	MYEOV2
Binding Specificity:	AA 1-252
Reactivity:	Human
Host:	Mouse
Clonality:	Polyclonal
Conjugate:	This MYEOV2 antibody is un-conjugated
Application:	Western Blotting (WB)

Product Details

Purpose:	Mouse polyclonal antibody raised against a full-length human MYEOV2 protein.
Immunogen:	MYEOV2 (NP_612209.1, 1 a.a. ~ 252 a.a) full-length human protein.
Sequence:	MWRAPEAALR PEVSLERRGP EMKPAVDEMF PEGAGPYVDL DEVARARRES PSAGGSTGLL MDLAANEKAV HADFFNDFED LFDDDDIHSS GLPRTSQSS MVPALQRGQS EHGVRGKAAE RPVVSEERCE LNGREVAALD RAFGSTGHGQ GAEALMFTRC REHPLCGTNK ATSEGKMG TG RLRNSLRKNQ SKWLGSYLEV LRTTRSREV SEDSTISVST HWRGKCFKSD ETPSVAGGEE GKKTTPCID VR
Cross-Reactivity:	Human
Characteristics:	Antibody reactive against mammalian transfected lysate.

## Target Details

Target:	MYEOV2
Alternative Name:	MYEOV2 ( <a href="#">MYEOV2 Products</a> )
Background:	Full Gene Name: myeloma overexpressed 2 Synonyms:
Gene ID:	150678
NCBI Accession:	<a href="#">NM_138336</a>

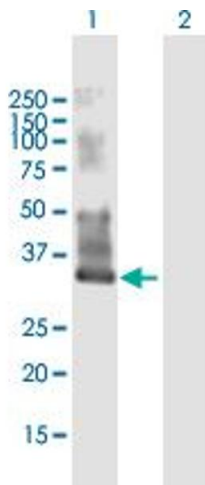
## Application Details

Application Notes:	Optimal working dilution should be determined by the investigator.
Restrictions:	For Research Use only

## Handling

Buffer:	In 1x PBS, pH 7.4
Handling Advice:	Aliquot to avoid repeated freezing and thawing.
Storage:	-20 °C
Storage Comment:	Store at -20°C or lower. Aliquot to avoid repeated freezing and thawing.

## Images



### Western Blotting

**Image 1.** Western Blot analysis of MYEOV2 expression in transfected 293T cell line by MYEOV2 MaxPab polyclonal antibody.

Lane 1: MYEOV2 transfected lysate(27.72 KDa).

Lane 2: Non-transfected lysate.