

Datasheet for ABIN1327577
anti-WFDC5 antibody (AA 1-123)



[Go to Product page](#)

1 Image

Overview

Quantity:	50 µg
Target:	WFDC5
Binding Specificity:	AA 1-123
Reactivity:	Human
Host:	Mouse
Clonality:	Polyclonal
Conjugate:	This WFDC5 antibody is un-conjugated
Application:	Western Blotting (WB)

Product Details

Purpose:	Mouse polyclonal antibody raised against a full-length human WFDC5 protein.
Immunogen:	WFDC5 (NP_663627.1, 1 a.a. ~ 123 a.a) full-length human protein.
Sequence:	MRTQSLLLLG ALLAVGSQLP AVFGRKKGEK SGGCPPDDGP CLLSVPDQCV EDSQCPLTRK CCYRACFRQC VPRVSVKLGS CPEDQLRCLS PMNHLCHKDS DCSGKKRCCH SACGRDCRDP ARG
Cross-Reactivity:	Human
Characteristics:	Antibody reactive against mammalian transfected lysate.

Target Details

Target:	WFDC5
Alternative Name:	WFDC5 (WFDC5 Products)

Target Details

Background: Full Gene Name: WAP four-disulfide core domain 5
Synonyms: PRG5,WAP1,dJ211D12.5

Gene ID: 149708

NCBI Accession: [NM_145652](#)

Application Details

Application Notes: Optimal working dilution should be determined by the investigator.

Restrictions: For Research Use only

Handling

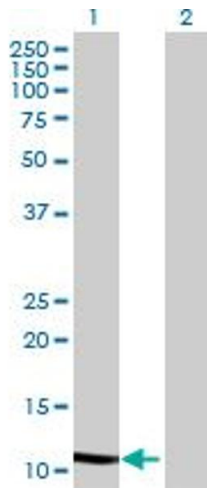
Buffer: In 1x PBS, pH 7.4

Handling Advice: Aliquot to avoid repeated freezing and thawing.

Storage: -20 °C

Storage Comment: Store at -20°C or lower. Aliquot to avoid repeated freezing and thawing.

Images



Western Blotting

Image 1. Western Blot analysis of WFDC5 expression in transfected 293T cell line by WFDC5 MaxPab polyclonal antibody.

Lane 1: WFDC5 transfected lysate(13.53 KDa).

Lane 2: Non-transfected lysate.