

Datasheet for ABIN1327631  
**anti-IGHA2 antibody (AA 1-477)**



[Go to Product page](#)

5 Images

Overview

Quantity:	50 µL
Target:	IGHA2
Binding Specificity:	AA 1-477
Reactivity:	Human
Host:	Mouse
Clonality:	Polyclonal
Conjugate:	This IGHA2 antibody is un-conjugated
Application:	Immunofluorescence (IF), Western Blotting (WB)

Product Details

Purpose:	Mouse polyclonal antibody raised against a full-length human IGHA2 protein.
Immunogen:	IGHA2 (AAH73765.1, 1 a.a. ~ 477 a.a) full-length human protein.
Sequence:	<p>MKHLWFFLLL VAAPRWVLSQ VQLQESGPGI VKPSETLSLT CTVSGGSISS YYWSWIRQTA            GKLEWIGYI SHSGSTTYNP SLKSRVTLST DTSKNQFSLR LNSVTAADTA VYYCAHGSSW            DFAFDYWGQG TLVTVSSASP TSPKVFPLSL DSTPQDGNVV VACLVQGGFFP QEPLSVTWSE            SGQNVTARNF PPSQDASGDL YTTSSQLTLP ATQCPDGKSV TCHVKHYTNP SQDVTVPSPV            PPPPCCHPR LSLHRPALED LLLGSEANLT CTLTGLRDAS GATFTWTPSS GKSAVQGPPE            RDLGCGYSVS SVLPGCAQPW NHGETFTCTA AHPELKTPLT ANITKSGNTF RPEVHLLPPP            SEELALNELV TLTCLARGFS PKDVLVRWLQ GSQELPREKY LTWASRQEPS QGTTTTFAVTS            ILRVAEDWK KGDTFSCMVG HEALPLAFTQ KTIDRLAGKP THVNVSVVMA EVDGTCY</p>
Cross-Reactivity:	Human

## Product Details

---

Characteristics: Antibody reactive against mammalian transfected lysate.

## Target Details

---

Target: IGHA2

Alternative Name: IGHA2 ([IGHA2 Products](#))

Background: Full Gene Name: immunoglobulin heavy constant alpha 2 (A2m marker)  
Synonyms:

Gene ID: 3494

## Application Details

---

Application Notes: Optimal working dilution should be determined by the investigator.

Restrictions: For Research Use only

## Handling

---

Format: Liquid

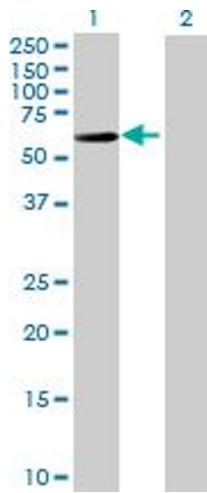
Buffer: No additive

Preservative: Without preservative

Handling Advice: Aliquot to avoid repeated freezing and thawing.

Storage: -20 °C

Storage Comment: Store at -20°C or lower. Aliquot to avoid repeated freezing and thawing.

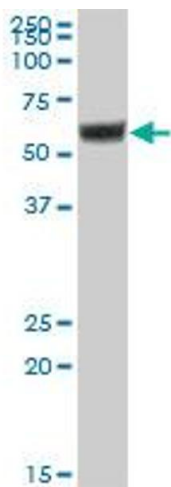


### Western Blotting

**Image 1.** Western Blot analysis of IGHA2 expression in transfected 293T cell line by IGHA2 MaxPab polyclonal antibody.

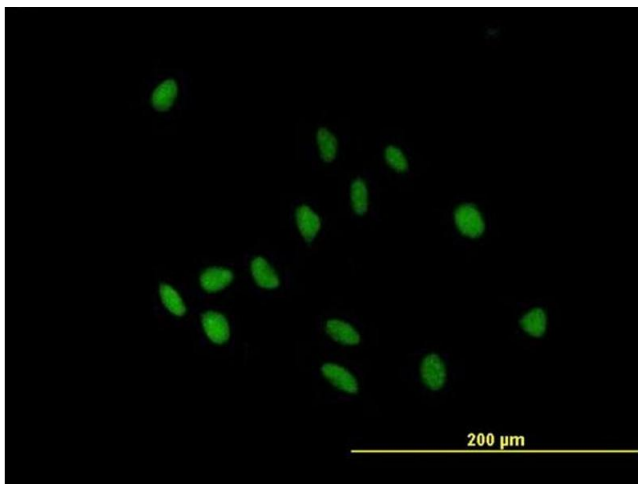
Lane 1: IGHA2 transfected lysate(52.47 KDa).

Lane 2: Non-transfected lysate.



### Western Blotting

**Image 2.** IGHA2 MaxPab polyclonal antibody. Western Blot analysis of IGHA2 expression in human colon.



### Immunofluorescence

**Image 3.** Immunofluorescence of purified MaxPab antibody to IGHA2 on HeLa cell. [antibody concentration 10 ug/ml]

Please check the [product details page](#) for more images. Overall 5 images are available for ABIN1327631.