



[Go to Product page](#)

Datasheet for ABIN1327653

## anti-Casein alpha S1 antibody (AA 1-185)

### 1 Image

#### Overview

Quantity:	50 µL
Target:	Casein alpha S1 (CSN1S1)
Binding Specificity:	AA 1-185
Reactivity:	Human
Host:	Mouse
Clonality:	Polyclonal
Conjugate:	This Casein alpha S1 antibody is un-conjugated
Application:	Western Blotting (WB)

#### Product Details

Purpose:	Mouse polyclonal antibody raised against a full-length human CSN1S1 protein.
Immunogen:	CSN1S1 (NP_001881.1, 1 a.a. ~ 185 a.a) full-length human protein.
Sequence:	MRLILTCLV AVALARPKLP LRYPERLQNP SESSEPIPLE SREEYMNGMN RQRNIREKQ TDEIKDTRNE STQNCVVAEP EKMESSISSS SEEMSLKCA EQFCRLNEYN QLQLQAAHAQ EQIRRMNENS HVQVPFQQLN QLAAYPYAVW YYPQIMQYVP FPPFSDISNP TAHENYEKNN VMLQW
Cross-Reactivity:	Human
Characteristics:	Antibody reactive against mammalian transfected lysate.

#### Target Details

Target:	Casein alpha S1 (CSN1S1)
---------	--------------------------

## Target Details

Alternative Name:	CSN1S1 ( <a href="#">CSN1S1 Products</a> )
Background:	Full Gene Name: casein alpha s1 Synonyms: CASA,CSN1,MGC149368
Gene ID:	1446
NCBI Accession:	<a href="#">NM_001890</a>

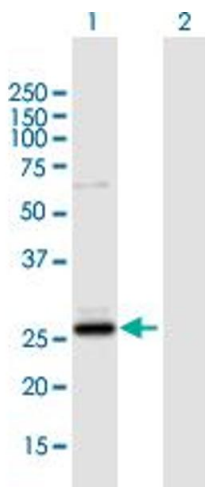
## Application Details

Application Notes:	Optimal working dilution should be determined by the investigator.
Restrictions:	For Research Use only

## Handling

Format:	Liquid
Buffer:	No additive
Preservative:	Without preservative
Handling Advice:	Aliquot to avoid repeated freezing and thawing.
Storage:	-20 °C
Storage Comment:	Store at -20°C or lower. Aliquot to avoid repeated freezing and thawing.

## Images



### Western Blotting

**Image 1.** Western Blot analysis of CSN1S1 expression in transfected 293T cell line by CSN1S1 MaxPab polyclonal antibody.

Lane 1: CSN1S1 transfected lysate(21.70 kDa).

Lane 2: Non-transfected lysate.