



[Go to Product page](#)

Datasheet for ABIN1327663  
**anti-SAT1 antibody (AA 88-171)**

5 Images

### Overview

Quantity:	50 µL
Target:	SAT1
Binding Specificity:	AA 88-171
Reactivity:	Human
Host:	Mouse
Clonality:	Polyclonal
Conjugate:	This SAT1 antibody is un-conjugated
Application:	Western Blotting (WB), ELISA

### Product Details

Purpose:	Mouse polyclonal antibody raised against a partial recombinant SAT.
Immunogen:	SAT (NP_002961, 88 a.a. ~ 171 a.a) partial recombinant protein with GST tag.
Sequence:	LLYLEDFVMSDYRGFGIGS EILKNLSQVA MRCRCSSMHF LVAEWNPEPSI NFKRRGASD LSSEEGWRLF KIDKEYLLKM ATEE
Cross-Reactivity:	Human, Mouse, Rat
Characteristics:	Antibody Reactive Against Recombinant Protein.

### Target Details

Target:	SAT1
Alternative Name:	SAT1 ( <a href="#">SAT1 Products</a> )

## Target Details

Background:	Full Gene Name: spermidine/spermine N1-acetyltransferase 1 Synonyms: DC21,KFSD,SAT,SSAT,SSAT-1
Gene ID:	6303
NCBI Accession:	<a href="#">NM_002970</a>

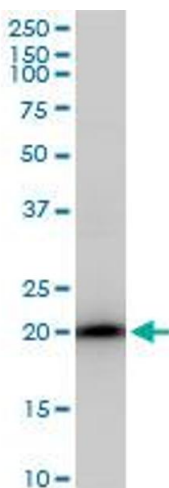
## Application Details

Application Notes:	Optimal working dilution should be determined by the investigator.
Restrictions:	For Research Use only

## Handling

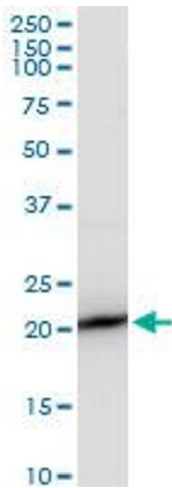
Format:	Liquid
Buffer:	50 % glycerol
Handling Advice:	Aliquot to avoid repeated freezing and thawing.
Storage:	-20 °C
Storage Comment:	Store at -20°C or lower. Aliquot to avoid repeated freezing and thawing.

## Images



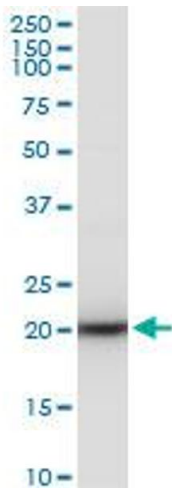
### Western Blotting

**Image 1.** SAT polyclonal antibody (A01), Lot # 051213JC01.  
Western Blot analysis of SAT expression in MCF-7.



#### Western Blotting

**Image 2.** SAT polyclonal antibody (A01), Lot # 051213JC01.  
Western Blot analysis of SAT expression in NIH/3T3.



#### Western Blotting

**Image 3.** SAT polyclonal antibody (A01), Lot # 051213JC01.  
Western Blot analysis of SAT expression in PC-12.

Please check the [product details page](#) for more images. Overall 5 images are available for ABIN1327663.