



[Go to Product page](#)

Datasheet for ABIN1327683
anti-GPR183 antibody (AA 1-361)

2 Images

Overview

Quantity:	50 µL
Target:	GPR183
Binding Specificity:	AA 1-361
Reactivity:	Human
Host:	Mouse
Clonality:	Polyclonal
Conjugate:	This GPR183 antibody is un-conjugated
Application:	Western Blotting (WB)

Product Details

Purpose:	Mouse polyclonal antibody raised against a full-length human GPR183 protein.
Immunogen:	GPR183 (NP_004942.1, 1 a.a. ~ 361 a.a) full-length human protein.
Sequence:	MDIQMANNFT PPSATPQGND CDLYAHHSTA RIVMPLHYSL VFIIGLVGNL LALVVIVQNR KKINSTTLYS TNLVISDILF TTALPTRIAY YAMGFDWRIG DALCRITALV FYINTYAGVN FMTCLSIDRF IAVVHPLRYN KIKRIEHAKG VCIFVWILVF AQTLP LLINP MSKQEAERIT CMEYPNFEET KSLPWILLGA CFIGYVLPLI IILICYSQIC CKLFRTAKQN PLTEKSGV NK KALNTIILII VVFVLCFTPY HVAIQHM IK KLRFSNFLEC SQRHSFQISL HFTVCLMNFN CCMDPFYIFF ACKGYKRKVM RMLKRQVSVS ISSAVKSAPE ENSREMTETQ MMIHSKSSNG K
Cross-Reactivity:	Human
Characteristics:	Antibody reactive against mammalian transfected lysate.

Target Details

Target:	GPR183
Alternative Name:	GPR183 (GPR183 Products)
Background:	Full Gene Name: G protein-coupled receptor 183 Synonyms: EBI2
Gene ID:	1880
NCBI Accession:	NM_004951

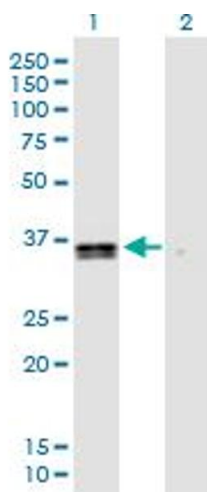
Application Details

Application Notes:	Optimal working dilution should be determined by the investigator.
Restrictions:	For Research Use only

Handling

Format:	Liquid
Buffer:	No additive
Preservative:	Without preservative
Handling Advice:	Aliquot to avoid repeated freezing and thawing.
Storage:	-20 °C
Storage Comment:	Store at -20°C or lower. Aliquot to avoid repeated freezing and thawing.

Images

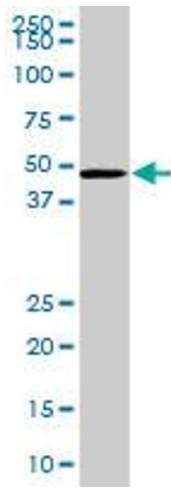


Western Blotting

Image 1. Western Blot analysis of GPR183 expression in transfected 293T cell line by GPR183 MaxPab polyclonal antibody.

Lane 1: EBI2 transfected lysate(39.71 KDa).

Lane 2: Non-transfected lysate.



Western Blotting

Image 2. EBI2 MaxPab polyclonal antibody. Western Blot analysis of EBI2 expression in human spleen.