



Datasheet for ABIN1327755  
**anti-PLEKHH2 antibody (AA 1-1493)**



[Go to Product page](#)

1 Image

Overview

Quantity:	50 µg
Target:	PLEKHH2
Binding Specificity:	AA 1-1493
Reactivity:	Human
Host:	Mouse
Clonality:	Polyclonal
Conjugate:	This PLEKHH2 antibody is un-conjugated
Application:	Western Blotting (WB)

Product Details

Purpose:	Mouse polyclonal antibody raised against a full-length human PLEKHH2 protein.
Immunogen:	PLEKHH2 (CAL37417.1, 1 a.a. ~ 1493 a.a) full-length human protein.
Sequence:	MAELSEPEGP VDWKERCVAL ESQLMKFRVQ ASKIRELLAE KMQQLERQVI DAERQAEKAF QQVQVMEDKL KAANIQTSES ETRLYNKQCQD LESLIQEKDD VIQNLELQLE EQKQIRIQEA KIIIEKAAKI KEWVTVKLNE LELENQNLRL INQNQTEEIR TMQSKLQEVQ GKKSSTVSTL KLSEGQRLSS LTFGCFLSRA RSPQVVKSE EMSKISSKEP EFTEGKDMEE MEIPEKSVDN QVLENNRGQR TLHQTPCGSE QNRKTRTSFA TDGGISQNSG APVSDWSSDE EDGSKGRSKS RCTSTLSSHT SEEGVQCSRMR GSEMYLTASD DSSSIFEEET FGIKRPEHKK LYSWQQEAQW KALNSPLGKG NSELKKEQD SSSDELNKKF QSQRLDYSSS SSEANTPSPI LTPALMPKHP NLSLGGKTQL VPSSHLPPPK LRIPNVFSIS AALAKRHLSQ PQLSSDRMFG TNRNAISMIR PLRPQETDLD LVDGDSTEVL ENMDTSCDDG LFSYDSLSP NSDDQEHCDK AKKVAYSKPP TPPLHRFSPW ESRIYAVAKS GIRMSEAFNM ESVNKNSAAT LSYTTSGLYT SLIYKNMTTP

## Product Details

---

VYTTLK GKAT QISSPFLDD SSGSEEDSS RSSRTSESD SRSRSGPGSP RAMKRGVSL  
SVASESDYAI PPDAYSTDTE YSQPEQKLPK TCSSSSDNGK NEPLEKSGYL LKMSGKVKSW  
KRRWFVLKGC ELPYYKSPSD VIRKPQGHIE LSASCSILRG DNKQTVQLTT EKHTYYLTAD  
SPNILEEWIK VLQNALRVQA ANPLSLQPEG KPTMKGLLTK VKHGYSKRWW CTLIGKTLYY  
FRSQEDKFPL GQIKLWEVKV EEVDRSCDSD EDYEASGRSL LSTHYTIVIH PKDQGPTYLL  
IGSKHEKDTW LYHLTVAAGS NNVNVGSEFE QLVCKLLNID GEPSSQIWRH PTLCHSKEGI  
ISPLTTLPSE ALQTEAIKLF KTCQLFINAA VDSPAIDYHI SLAQSAQC LTHPELQNEI CCQLIKQTRR  
RQPQNQPGPL QGWQLLALCV GLFLPHHPFL WLLRLHLKRN ADSRTEFGKY AIYCQRCVER  
TQQNGDREAR PSRMEILSTL LRNPYHHSPL FSIPVHFMNG IYQVVGFDAS TTVEEFLNTL  
NQDTGMRKPA QSGFALFTDD PSGRDLEHCL QGNIKICDII SKWEQASKEQ QPGKCEGTRT  
VRLTYKNRLY FSVQARGETD REKLLLMYQT NDQIINGLFP LNKDLALEMA ALLSQVEIGD  
FERPFSTPAG HVTNQCKVNQ TLKQVIEKFY PKRYRDGCSE EQLRQLCQRL STRWMALRGH  
SAADCVRIYL TVARKWPFFG AKLFLAKPIT PSSLGSTFLW LAVHEDGLSL LEYNSMRLIV  
SYVYKSLMTF GGYQDDFMVV INNTHSKDKP TEKLLFAMAK PEILEITLLI ASYINNFHQQ  
KAAFHLSAP ALLSAQTRGP QARMMGSQPL LSSSRPTKGP TLL

---

Cross-Reactivity: Human

Characteristics: Antibody reactive against mammalian transfected lysate.

## Target Details

---

Target: PLEKHH2

Alternative Name: PLEKHH2 ([PLEKHH2 Products](#))

Background: Full Gene Name: pleckstrin homology domain containing, family H (with MyTH4 domain)  
member 2  
Synonyms: KIAA2028, PLEKHH1L

---

Gene ID: 130271

## Application Details

---

Application Notes: Optimal working dilution should be determined by the investigator.

Restrictions: For Research Use only

## Handling

---

Buffer: In 1x PBS, pH 7.4

---

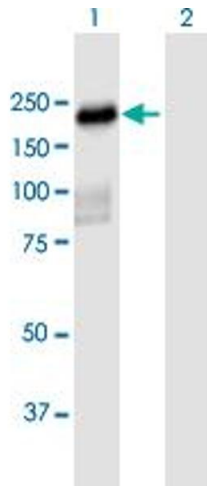
## Handling

Handling Advice: Aliquot to avoid repeated freezing and thawing.

Storage: -20 °C

Storage Comment: Store at -20°C or lower. Aliquot to avoid repeated freezing and thawing.

## Images



### Western Blotting

**Image 1.** Western Blot analysis of PLEKHH2 expression in transfected 293T cell line by PLEKHH2 MaxPab polyclonal antibody.

Lane 1: PLEKHH2 transfected lysate(164.23 KDa).

Lane 2: Non-transfected lysate.