

Datasheet for ABIN1332978

## PITX2 293T Cell Transient Overexpression Lysate(Denatured)



[Go to Product page](#)

### 2 Images

#### Overview

Quantity:	100 µL
Target:	PITX2
Protein Species:	Human
Species of Lysate:	Human Cells
Application:	Western Blotting (WB)

#### Product Details

Purpose:	Transient Overexpression Lysate
Specificity:	Denatured
Characteristics:	PITX2 293T Cell Transient Overexpression Lysate (Denatured) Used Plasmid: pCMV-PITX2 full-length
Lysate Fraction:	Whole Cell Lysate
Lysate Type:	Overexpression Lysate
Lysed Cells:	HEK 293T Cells

#### Target Details

Target:	PITX2
Alternative Name:	PITX2 ( <a href="#">PITX2 Products</a> )
Background:	Full Gene Name: paired-like homeodomain 2 Synonyms: ARP1,Brx1,IDG2,IGDS,IGDS2,IHG2,IRID2,MGC111022,MGC20144,Otlx2,PTX2,RGS,RIEG,RIEG1,RS

## Target Details

Gene ID: 5308

NCBI Accession: [NP\\_700476, NM\\_153427](#)

## Application Details

Application Notes: Optimal working dilution should be determined by the investigator.

Comment: Product Quality tested by: Transient overexpression cell lysate was tested with Anti-PITX2 antibody by Western Blots.

Restrictions: For Research Use only

## Handling

Format: Liquid

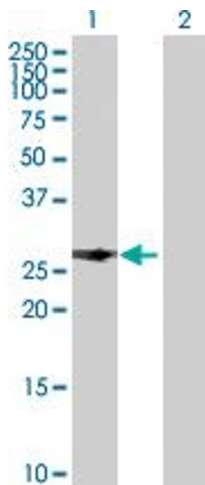
Buffer: 1X Sample Buffer (50 mM Tris-HCl, 2 % SDS, 10 % glycerol, 300 mM 2-mercaptoethanol, 0.01 % Bromophenol blue)

Handling Advice: Aliquot to avoid repeated freezing and thawing.

Storage: -80 °C

Storage Comment: Store at -80 °C. Aliquot to avoid repeated freezing and thawing.

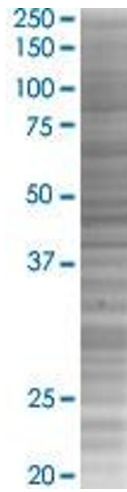
## Images



### Western Blotting

**Image 1.** Lane 1: PITX2 transfected lysate ( 30.30 KDa)

Lane 2: Non-transfected lysate.



### Western Blotting

**Image 2.** PITX2 transfected lysate.