

Datasheet for ABIN1332983  
**PLA2G1B 293T Cell Transient Overexpression Lysate(Denatured)**



[Go to Product page](#)

2 Images

Overview

Quantity:	100 µL
Target:	PLA2G1B
Protein Species:	Human
Species of Lysate:	Human Cells
Application:	Western Blotting (WB)

Product Details

Purpose:	Transient Overexpression Lysate
Specificity:	Denatured
Characteristics:	PLA2G1B 293T Cell Transient Overexpression Lysate (Denatured) Used Plasmid: pCMV-PLA2G1B full-length
Lysate Fraction:	Whole Cell Lysate
Lysate Type:	Overexpression Lysate
Lysed Cells:	HEK 293T Cells

Target Details

Target:	PLA2G1B
Alternative Name:	PLA2G1B ( <a href="#">PLA2G1B Products</a> )
Background:	Full Gene Name: phospholipase A2, group IB (pancreas) Synonyms: MGC119834,MGC119835,PLA2,PLA2A,PPLA2

## Target Details

Gene ID: 5319

NCBI Accession: [NP\\_000919, NM\\_000928](#)

## Application Details

Application Notes: Optimal working dilution should be determined by the investigator.

Comment: Product Quality tested by: Transient overexpression cell lysate was tested with Anti-PLA2G1B antibody by Western Blots.

Restrictions: For Research Use only

## Handling

Format: Liquid

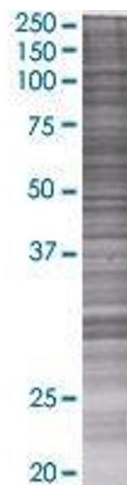
Buffer: 1X Sample Buffer (50 mM Tris-HCl, 2 % SDS, 10 % glycerol, 300 mM 2-mercaptoethanol, 0.01 % Bromophenol blue)

Handling Advice: Aliquot to avoid repeated freezing and thawing.

Storage: -80 °C

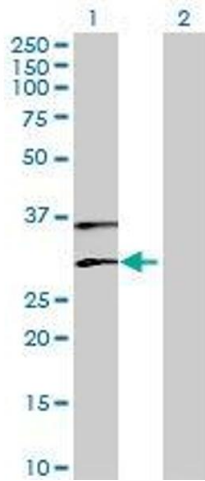
Storage Comment: Store at -80 °C. Aliquot to avoid repeated freezing and thawing.

## Images



### Western Blotting

**Image 1.** PLA2G1B transfected lysate.



### Western Blotting

**Image 2.** Lane 1: PLA2G1B transfected lysate ( 16.39 KDa)  
Lane 2: Non-transfected lysate.