

Datasheet for ABIN1339624

**Rat brain tissue lysate (non-denatured)****1** Image**1** Publication[Go to Product page](#)

## Overview

Quantity:	200 µg
Protein Species:	Rat
Species of Lysate:	Rat
Application:	Immunoprecipitation (IP), Western Blotting (WB)

## Product Details

Purpose:	Whole tissue lysate
Specificity:	Non-denatured
Characteristics:	Rat brain tissue lysate (non-denatured) Used Tissue: Brain
Lysate Fraction:	Whole Tissue Lysate
Lysate Type:	Tissue Lysate

## Target Details

Background:	Full Gene Name: Synonyms:
-------------	------------------------------

## Application Details

Application Notes:	Use it directly for immuno-precipitation, or heat lysate with SDS gel loading buffer to 95 °C for 5 minutes followed by rapid cooling for western blot application. If dissociating conditions are required, add reducing agent prior to heating.
--------------------	---

## Application Details

Comment:	Tissue lysate was prepared by homogenization in ice-cold modified RIPA Lysis Buffer with cocktail of protease inhibitors (Sigma). Cell debris was removed by centrifugation. Protein concentration was determined with Bradford assay (Bio-Rad protein assay, Microplate Standard assay). The lysate was adjusted to 5 mg/ml.  Product Quality tested by: 12.5% SDS-PAGE Stained with Coomassie Blue.
Restrictions:	For Research Use only

## Handling

Format:	Liquid
Buffer:	Modified RIPA Lysis Buffer: 50 mM Tris-HCl pH 7.4, 150 mM NaCl, 1 mM EDTA, 1 % Triton X-100, 0.1 % SDS, 1 % Sodium deoxycholate, 1 mM PMSF.
Handling Advice:	Aliquot to avoid repeated freezing and thawing.
Storage:	-80 °C
Storage Comment:	Store at -80 °C. Aliquot to avoid repeated freezing and thawing.

## Publications

Product cited in:	Májek, Riedelová-Reicheltoová, Pecánková, Dyr: "Improved coomassie blue dye-based fast staining protocol for proteins separated by SDS-PAGE." in: <b>PLoS ONE</b> , Vol. 8, Issue 11, pp. e81696, (2013) ( <a href="#">PubMed</a> ).
-------------------	--

## Validation report #101185 for Enzyme Immunoassay (EIA)

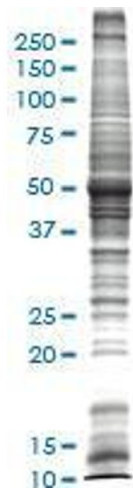


Image 1.