

Datasheet for ABIN1339863

**CCNB1 & CDKN1A Protein Protein Interaction Antibody Pair**

5 Images

[Go to Product page](#)

## Overview

Quantity:	1 set
Target:	Cyclin B1 (CCNB1)
Reactivity:	Human
Host:	Rabbit, Mouse
Application:	Proximity Ligation Assay (PLA)

## Product Details

Purpose:	This protein protein interaction antibody pair set comes with two antibodies to detect the protein-protein interaction, one against the CCNB1 protein, and the other against the CDKN1A protein
Cross-Reactivity:	Human
Characteristics:	This protein protein interaction antibody pair set comes with two antibodies to detect the protein-protein interaction, one against the CCNB1 protein, and the other against the CDKN1A protein .
Components:	<p>Antibody pair set content:</p> <ol style="list-style-type: none"><li>1. CCNB1 rabbit purified polyclonal antibody (20 µg)</li><li>2. CDKN1A mouse monoclonal antibody (40 µg)</li></ol> <p>*Reagents are sufficient for at least 30-50 assays using recommended protocols.</p>

## Target Details

Target:	Cyclin B1 (CCNB1)
Alternative Name:	CCNB1 ( <a href="#">CCNB1 Products</a> )

## Target Details

Sub Type:	Cocktail
Background:	Full Gene Name: cyclin B1 Synonyms: CCNB
Gene ID:	891, 1026

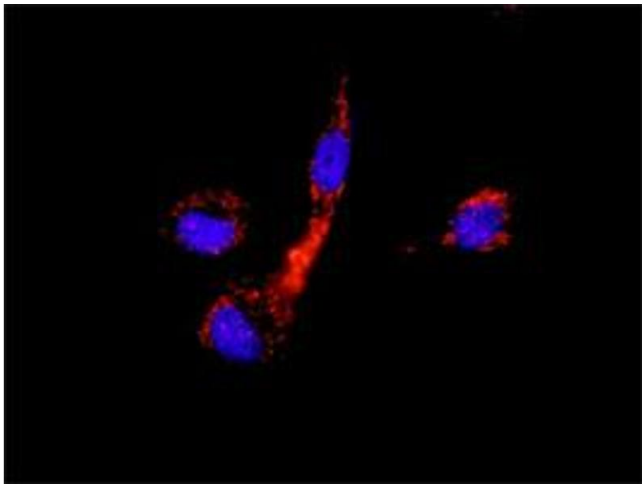
## Application Details

Application Notes:	Optimal working dilution should be determined by the investigator.
Restrictions:	For Research Use only

## Handling

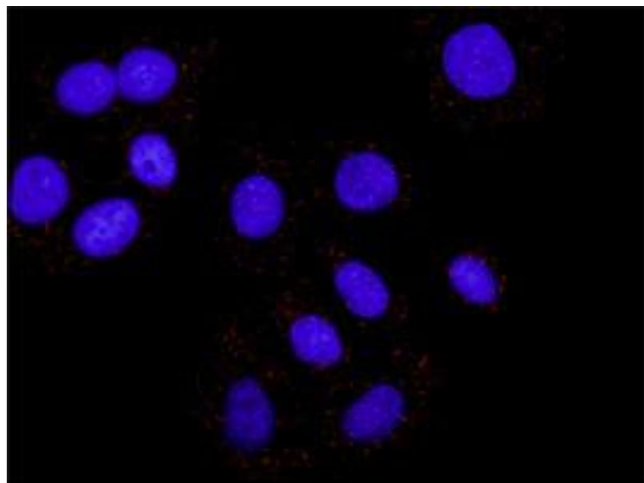
Handling Advice:	Please aliquot to avoid repeated freeze thaw cycle.
Storage:	-20 °C
Storage Comment:	Store reagents of the antibody pair set at -20°C or lower. Please aliquot to avoid repeated freeze thaw cycle. Reagents should be returned to -20°C storage immediately after use.

## Images



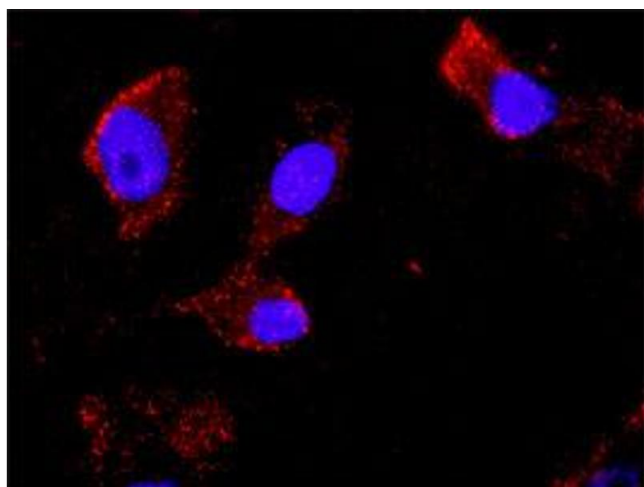
### Proximity Ligation Assay

**Image 1.** Representative image of Proximity Ligation Assay of protein-protein interactions between CCNB1 and CDKN1A. A-549 cells were stained with anti-CCNB1 rabbit purified polyclonal antibody 1:100 and anti-CDKN1A mouse monoclonal antibody 1:50. Each red dot represents the detection of protein-protein interaction complex, and nuclei were counterstained with DAPI (blue).



#### Proximity Ligation Assay

**Image 2.** Representative image of Proximity Ligation Assay of protein-protein interactions between CCNB1 and CDKN1A. HT-29 cells were stained with anti-CCNB1 rabbit purified polyclonal antibody 1:100 and anti-CDKN1A mouse monoclonal antibody 1:50. Each red dot represents the detection of protein-protein interaction complex, and nuclei were counterstained with DAPI (blue).



#### Proximity Ligation Assay

**Image 3.** Representative image of Proximity Ligation Assay of protein-protein interactions between CCNB1 and CDKN1A. PC-3 cells were stained with anti-CCNB1 rabbit purified polyclonal antibody 1:100 and anti-CDKN1A mouse monoclonal antibody 1:50. Each red dot represents the detection of protein-protein interaction complex, and nuclei were counterstained with DAPI (blue).

Please check the [product details page](#) for more images. Overall 5 images are available for ABIN1339863.