

Datasheet for ABIN1339981

IKBKB & FOXO3 Protein Protein Interaction Antibody Pair[Go to Product page](#)**5** Images

Overview

Quantity:	1 set
Target:	IKBKB
Reactivity:	Human
Host:	Rabbit, Mouse
Application:	Proximity Ligation Assay (PLA)

Product Details

Purpose:	This protein protein interaction antibody pair set comes with two antibodies to detect the protein-protein interaction, one against the IKBKB protein, and the other against the FOXO3 protein
Cross-Reactivity:	Human
Characteristics:	This protein protein interaction antibody pair set comes with two antibodies to detect the protein-protein interaction, one against the IKBKB protein, and the other against the FOXO3 protein .
Components:	<p>Antibody pair set content:</p> <ol style="list-style-type: none">1. IKBKB rabbit purified polyclonal antibody (20 µg)2. FOXO3 mouse monoclonal antibody (40 µg) <p>*Reagents are sufficient for at least 30-50 assays using recommended protocols.</p>

Target Details

Target:	IKBKB
Alternative Name:	IKBKB (IKBKB Products)

Target Details

Sub Type:	Cocktail
Background:	Full Gene Name: inhibitor of kappa light polypeptide gene enhancer in B-cells, kinase beta Synonyms: FLJ40509,IKK-beta,IKK2,IKKB,MGC131801,NFKB1KB
Gene ID:	3551, 2309

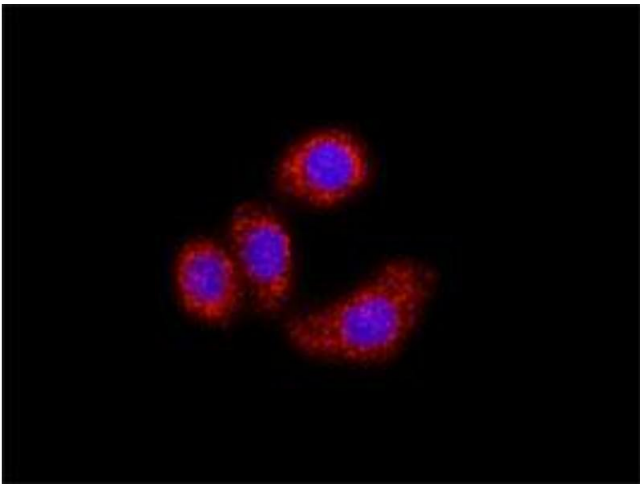
Application Details

Application Notes:	Optimal working dilution should be determined by the investigator.
Restrictions:	For Research Use only

Handling

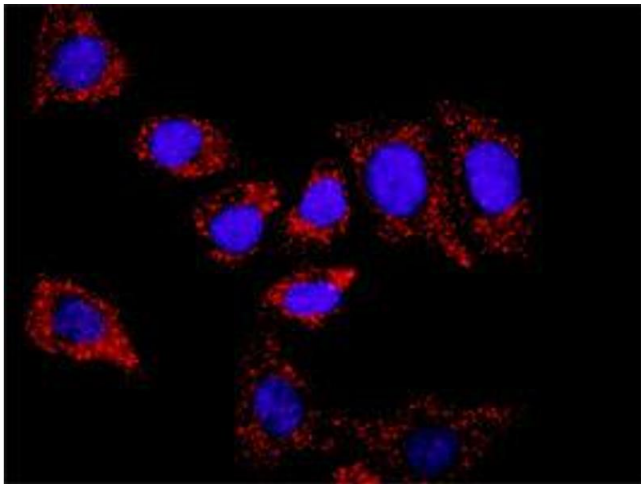
Handling Advice:	Please aliquot to avoid repeated freeze thaw cycle.
Storage:	-20 °C
Storage Comment:	Store reagents of the antibody pair set at -20°C or lower. Please aliquot to avoid repeated freeze thaw cycle. Reagents should be returned to -20°C storage immediately after use.

Images



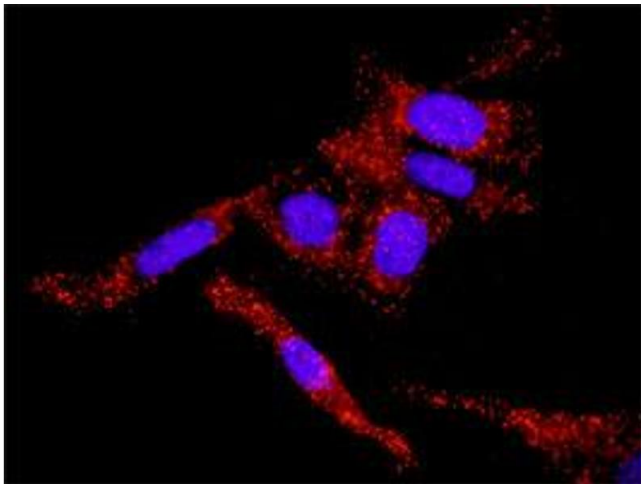
Proximity Ligation Assay

Image 1. Representative image of Proximity Ligation Assay of protein-protein interactions between IKKB and FOXO3. A-549 cells were stained with anti-IKKB rabbit purified polyclonal antibody 1:100 and anti-FOXO3 mouse monoclonal antibody 1:50. Each red dot represents the detection of protein-protein interaction complex, and nuclei were counterstained with DAPI (blue).



Proximity Ligation Assay

Image 2. Representative image of Proximity Ligation Assay of protein-protein interactions between IKBKB and FOXO3. HT-29 cells were stained with anti-IBKKB rabbit purified polyclonal antibody 1:100 and anti-FOXO3 mouse monoclonal antibody 1:50. Each red dot represents the detection of protein-protein interaction complex, and nuclei were counterstained with DAPI (blue).



Proximity Ligation Assay

Image 3. Representative image of Proximity Ligation Assay of protein-protein interactions between IKBKB and FOXO3. PC-3 cells were stained with anti-IBKKB rabbit purified polyclonal antibody 1:100 and anti-FOXO3 mouse monoclonal antibody 1:50. Each red dot represents the detection of protein-protein interaction complex, and nuclei were counterstained with DAPI (blue).

Please check the [product details page](#) for more images. Overall 5 images are available for ABIN1339981.