

Datasheet for ABIN1340332

E2F2 & E2F1 Protein Protein Interaction Antibody Pair[Go to Product page](#)**6** Images

Overview

Quantity:	1 set
Target:	E2F2
Reactivity:	Human
Host:	Rabbit, Mouse
Application:	Proximity Ligation Assay (PLA)

Product Details

Purpose:	This protein protein interaction antibody pair set comes with two antibodies to detect the protein-protein interaction, one against the E2F2 protein, and the other against the E2F1 protein
Cross-Reactivity:	Human
Characteristics:	This protein protein interaction antibody pair set comes with two antibodies to detect the protein-protein interaction, one against the E2F2 protein, and the other against the E2F1 protein .
Components:	Antibody pair set content: 1. E2F2 rabbit purified polyclonal antibody (20 µg) 2. E2F1 mouse monoclonal antibody (40 µg) *Reagents are sufficient for at least 30-50 assays using recommended protocols.

Target Details

Target:	E2F2
Alternative Name:	E2F2 (E2F2 Products)

Target Details

Sub Type:	Cocktail
Background:	Full Gene Name: E2F transcription factor 2 Synonyms: E2F-2
Gene ID:	1870, 1869

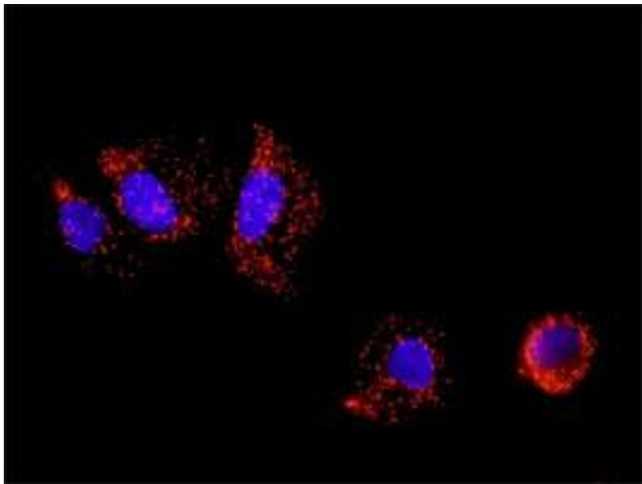
Application Details

Application Notes:	Optimal working dilution should be determined by the investigator.
Restrictions:	For Research Use only

Handling

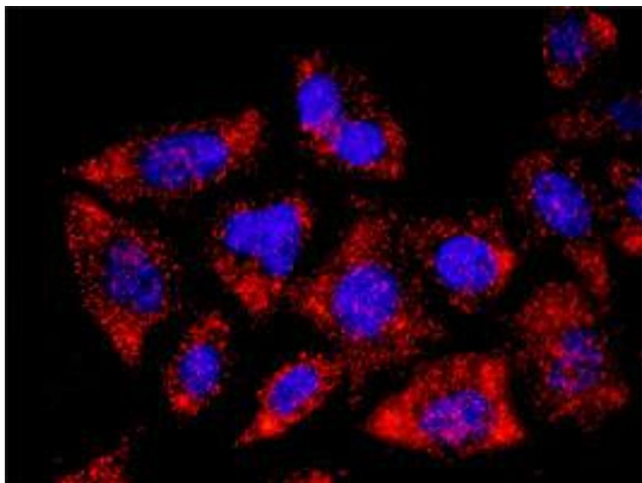
Handling Advice:	Please aliquot to avoid repeated freeze thaw cycle.
Storage:	-20 °C
Storage Comment:	Store reagents of the antibody pair set at -20°C or lower. Please aliquot to avoid repeated freeze thaw cycle. Reagents should be returned to -20°C storage immediately after use.

Images



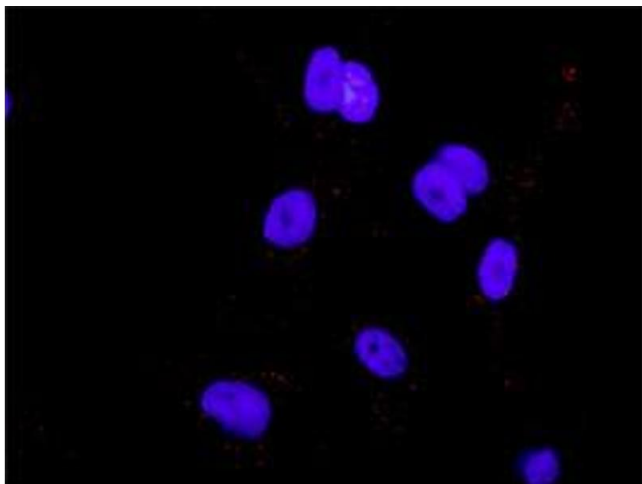
Proximity Ligation Assay

Image 1. Representative image of Proximity Ligation Assay of protein-protein interactions between E2F2 and E2F1. A-549 cells were stained with anti-E2F2 rabbit purified polyclonal antibody 1:100 and anti-E2F1 mouse monoclonal antibody 1:50. Each red dot represents the detection of protein-protein interaction complex, and nuclei were counterstained with DAPI (blue).



Proximity Ligation Assay

Image 2. Representative image of Proximity Ligation Assay of protein-protein interactions between E2F2 and E2F1. HT-29 cells were stained with anti-E2F2 rabbit purified polyclonal antibody 1:100 and anti-E2F1 mouse monoclonal antibody 1:50. Each red dot represents the detection of protein-protein interaction complex, and nuclei were counterstained with DAPI (blue).



Proximity Ligation Assay

Image 3. Representative image of Proximity Ligation Assay of protein-protein interactions between E2F2 and E2F1. PC-3 cells were stained with anti-E2F2 rabbit purified polyclonal antibody 1:100 and anti-E2F1 mouse monoclonal antibody 1:50. Each red dot represents the detection of protein-protein interaction complex, and nuclei were counterstained with DAPI (blue).

Please check the [product details page](#) for more images. Overall 6 images are available for ABIN1340332.