

Datasheet for ABIN1340360

**HDAC2 & RELA Protein Protein Interaction Antibody Pair**[Go to Product page](#)**5** Images

## Overview

Quantity:	1 set
Target:	HDAC2
Reactivity:	Human
Host:	Rabbit, Mouse
Application:	Proximity Ligation Assay (PLA)

## Product Details

Purpose:	This protein protein interaction antibody pair set comes with two antibodies to detect the protein-protein interaction, one against the HDAC2 protein, and the other against the RELA protein
Cross-Reactivity:	Human
Characteristics:	This protein protein interaction antibody pair set comes with two antibodies to detect the protein-protein interaction, one against the HDAC2 protein, and the other against the RELA protein .
Components:	<p>Antibody pair set content:</p> <ol style="list-style-type: none"><li>1. HDAC2 rabbit purified polyclonal antibody (20 µg)</li><li>2. RELA mouse monoclonal antibody (40 µg)</li></ol> <p>*Reagents are sufficient for at least 30-50 assays using recommended protocols.</p>

## Target Details

Target:	HDAC2
Alternative Name:	HDAC2 ( <a href="#">HDAC2 Products</a> )

## Target Details

Sub Type:	Cocktail
Background:	Full Gene Name: histone deacetylase 2 Synonyms: RPD3,YAF1
Gene ID:	3066, 5970

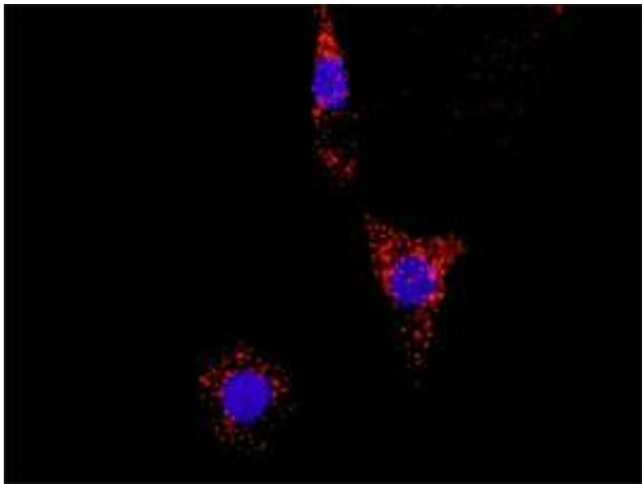
## Application Details

Application Notes:	Optimal working dilution should be determined by the investigator.
Restrictions:	For Research Use only

## Handling

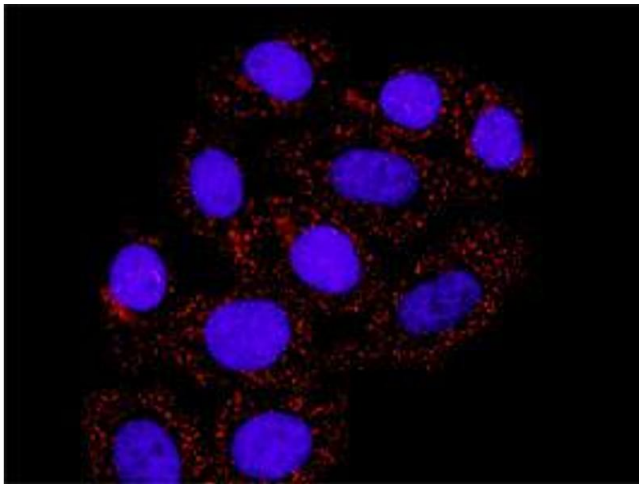
Handling Advice:	Please aliquot to avoid repeated freeze thaw cycle.
Storage:	-20 °C
Storage Comment:	Store reagents of the antibody pair set at -20°C or lower. Please aliquot to avoid repeated freeze thaw cycle. Reagents should be returned to -20°C storage immediately after use.

## Images



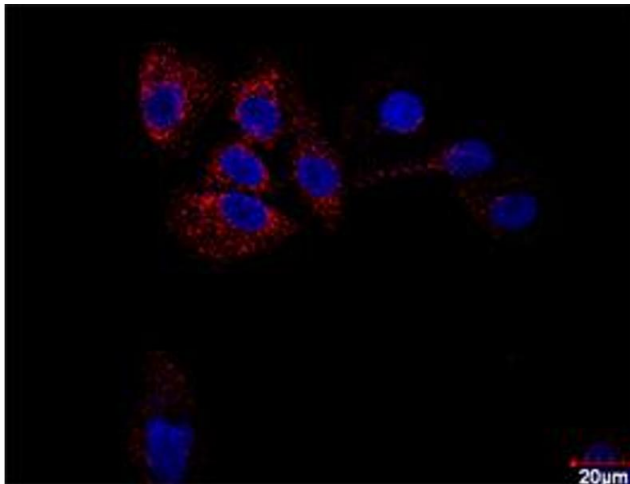
### Proximity Ligation Assay

**Image 1.** Representative image of Proximity Ligation Assay of protein-protein interactions between HDAC2 and RELA. A-549 cells were stained with anti-HDAC2 rabbit purified polyclonal antibody 1:100 and anti-RELA mouse monoclonal antibody 1:50. Each red dot represents the detection of protein-protein interaction complex, and nuclei were counterstained with DAPI (blue).



#### Proximity Ligation Assay

**Image 2.** Representative image of Proximity Ligation Assay of protein-protein interactions between HDAC2 and RELA. HT-29 cells were stained with anti-HDAC2 rabbit purified polyclonal antibody 1:100 and anti-RELA mouse monoclonal antibody 1:50. Each red dot represents the detection of protein-protein interaction complex, and nuclei were counterstained with DAPI (blue).



#### Proximity Ligation Assay

**Image 3.** Confocal microscopy image of Proximity Ligation Assay of protein-protein interactions between HDAC2 and RELA. A-549 cells were stained with anti-HDAC2 rabbit purified polyclonal antibody 1:100 and anti-RELA mouse monoclonal antibody 1:50. Each red dot represents the detection of protein-protein interaction complex, and nuclei were counterstained with DAPI (blue).

Please check the [product details page](#) for more images. Overall 5 images are available for ABIN1340360.