

Datasheet for ABIN1340694

## AGER (Human) IP-WB Antibody Pair



[Go to Product page](#)

### 1 Image

#### Overview

Quantity:	1 set
Target:	RAGE (AGER)
Reactivity:	Human
Host:	Rabbit, Mouse
Application:	Immunoprecipitation (IP)

#### Product Details

Purpose:	This IP-WB antibody pair set comes with one antibody for immunoprecipitation and another to detect the precipitated protein in western blot.
Cross-Reactivity:	Human
Characteristics:	This IP-WB antibody pair set comes with one antibody for immunoprecipitation and another to detect the precipitated protein in western blot.
Components:	<p>Antibody pair set content:</p> <ol style="list-style-type: none"> <li>1. Antibody pair for IP: mouse monoclonal anti-AGER (300 µg)</li> <li>2. Antibody pair for WB: rabbit polyclonal anti-AGER (50 µL)</li> </ol>

#### Target Details

Target:	RAGE (AGER)
Alternative Name:	AGER ( <a href="#">AGER Products</a> )
Sub Type:	Cocktail
Background:	Full Gene Name: advanced glycosylation end product-specific receptor

Target Details

	Synonyms: MGC22357,RAGE
Gene ID:	177

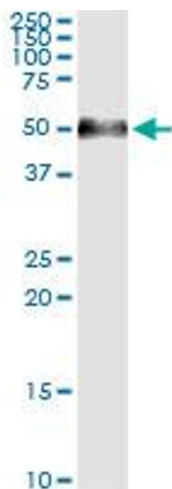
Application Details

Application Notes:	Optimal working dilution should be determined by the investigator.
Restrictions:	For Research Use only

Handling

Handling Advice:	Please aliquot to avoid repeated freeze thaw cycle.
Storage:	-20 °C
Storage Comment:	Store reagents of the antibody pair set at -20°C or lower. Please aliquot to avoid repeated freeze thaw cycle. Reagents should be returned to -20°C storage immediately after use.

Images



**Western Blotting**

**Image 1.** Immunoprecipitation of AGER transfected lysate using mouse monoclonal anti-AGER and Protein A Magnetic Bead