

Datasheet for ABIN1340699

AHSG (Human) Matched Antibody Pair**2** Images[Go to Product page](#)

Overview

Quantity:	1 set
Target:	Fetuin A (AHSG)
Reactivity:	Human
Host:	Mouse
Application:	ELISA

Product Details

Purpose:	This antibody pair set comes with matched antibody pair to detect and quantify protein level of human AHSG.
Cross-Reactivity:	Human
Characteristics:	This antibody pair set comes with matched antibody pair to detect and quantify protein level of human AHSG.
Components:	<p>Antibody pair set content:</p> <ol style="list-style-type: none">1. Capture antibody: mouse monoclonal anti-AHSG (100 µg)2. Detection antibody: biotinylated mouse monoclonal anti-AHSG, IgG1 Kappa (50 µg) <p>*Reagents are sufficient for at least 3-5 x 96 well plates using recommended protocols.</p>

Target Details

Target:	Fetuin A (AHSG)
Alternative Name:	AHSG (AHSG Products)
Sub Type:	Cocktail

Target Details

Background: Full Gene Name: alpha-2-HS-glycoprotein
Synonyms: A2HS,AHS,FETUA,HSGA

Gene ID: 197

Application Details

Application Notes: Optimal working dilution should be determined by the investigator.

Restrictions: For Research Use only

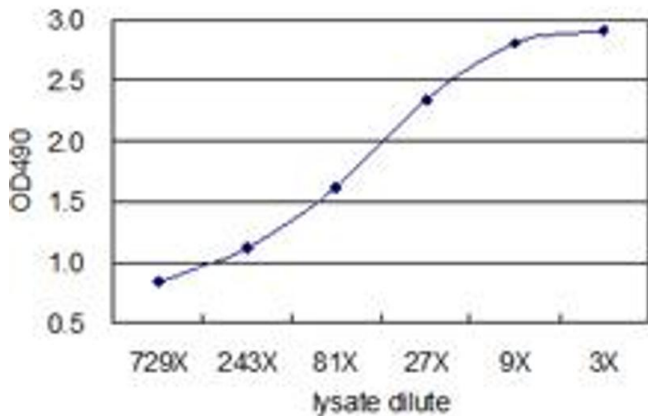
Handling

Handling Advice: Please aliquot to avoid repeated freeze thaw cycle.

Storage: -20 °C

Storage Comment: Store reagents of the antibody pair set at -20°C or lower. Please aliquot to avoid repeated freeze thaw cycle. Reagents should be returned to -20°C storage immediately after use.

Images



ELISA

Image 1. Standard curve using 293T overexpression lysate (non-denatured) as an analyte. Sandwich ELISA detection sensitivity ranging from approximately 729x to 3x dilution of the 293T overexpression lysate (non-denatured).

ELISA

Image 2. Sandwich ELISA detection sensitivity ranging from 3 ng/mL to 100 ng/mL.

