

Datasheet for ABIN1340859

C1QA (Human) Matched Antibody Pair



[Go to Product page](#)

1 Image

1 Publication

Overview

Quantity:	1 set
Target:	C1QA
Reactivity:	Human
Host:	Rabbit, Mouse
Application:	ELISA

Product Details

Purpose:	This antibody pair set comes with matched antibody pair to detect and quantify protein level of human C1QA.
Cross-Reactivity:	Human
Characteristics:	This antibody pair set comes with matched antibody pair to detect and quantify protein level of human C1QA.
Components:	<p>Antibody pair set content:</p> <ol style="list-style-type: none"> 1. Capture antibody: rabbit affinity purified polyclonal anti-C1QA (100 µg) 2. Detection antibody: mouse purified polyclonal anti-C1QA (20 µg) <p>*Reagents are sufficient for at least 1-2 x 96 well plates using recommended protocols.</p>

Target Details

Target:	C1QA
Alternative Name:	C1QA (C1QA Products)
Sub Type:	Cocktail

Target Details

Background:	Full Gene Name: complement component 1, q subcomponent, A chain Synonyms:
Gene ID:	712

Application Details

Application Notes:	Optimal working dilution should be determined by the investigator.
Restrictions:	For Research Use only

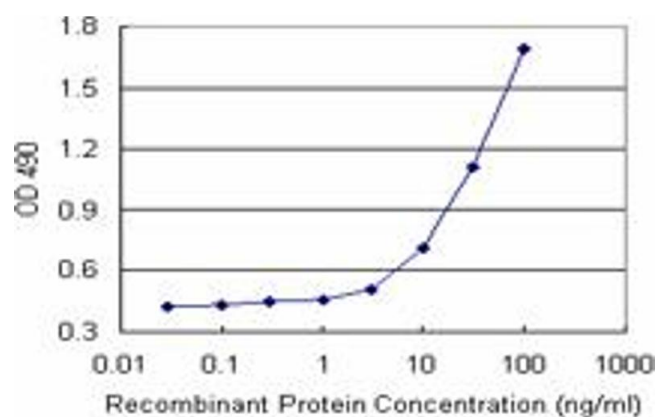
Handling

Handling Advice:	Please aliquot to avoid repeated freeze thaw cycle.
Storage:	-20 °C
Storage Comment:	Store reagents of the antibody pair set at -20°C or lower. Please aliquot to avoid repeated freeze thaw cycle. Reagents should be returned to -20°C storage immediately after use.

Publications

Product cited in:	Achieng, Guyah, Cheng, Ongecha, Ouma, Lambert, Perkins: "Molecular basis of reduced LAIR1 expression in childhood severe malarial anaemia: Implications for leukocyte inhibitory signalling." in: EBioMedicine , (2019) (PubMed).
-------------------	--

Images



ELISA

Image 1. Sandwich ELISA detection sensitivity ranging from 3 ng/mL to 100 ng/mL.