

Datasheet for ABIN1341014

CNN1 (Human) Matched Antibody Pair**3** Images[Go to Product page](#)

Overview

Quantity:	1 set
Target:	CNN1
Reactivity:	Human
Host:	Mouse
Application:	ELISA (Capture), ELISA

Product Details

Purpose:	This antibody pair set comes with matched antibody pair to detect and quantify protein level of human CNN1.
Cross-Reactivity:	Human
Characteristics:	This antibody pair set comes with matched antibody pair to detect and quantify protein level of human CNN1.
Components:	<p>Antibody pair set content:</p> <ol style="list-style-type: none">1. Capture antibody: mouse monoclonal anti-CNN1, IgG1 Kappa (100 µg)2. Detection antibody: biotinylated mouse monoclonal anti-CNN1, IgM Kappa (50 µg) <p>*Reagents are sufficient for at least 3-5 x 96 well plates using recommended protocols.</p>

Target Details

Target:	CNN1
Alternative Name:	CNN1 (CNN1 Products)
Sub Type:	Cocktail

Target Details

Background:	Full Gene Name: calponin 1, basic, smooth muscle Synonyms: SMCC,Sm-Calp
Gene ID:	1264

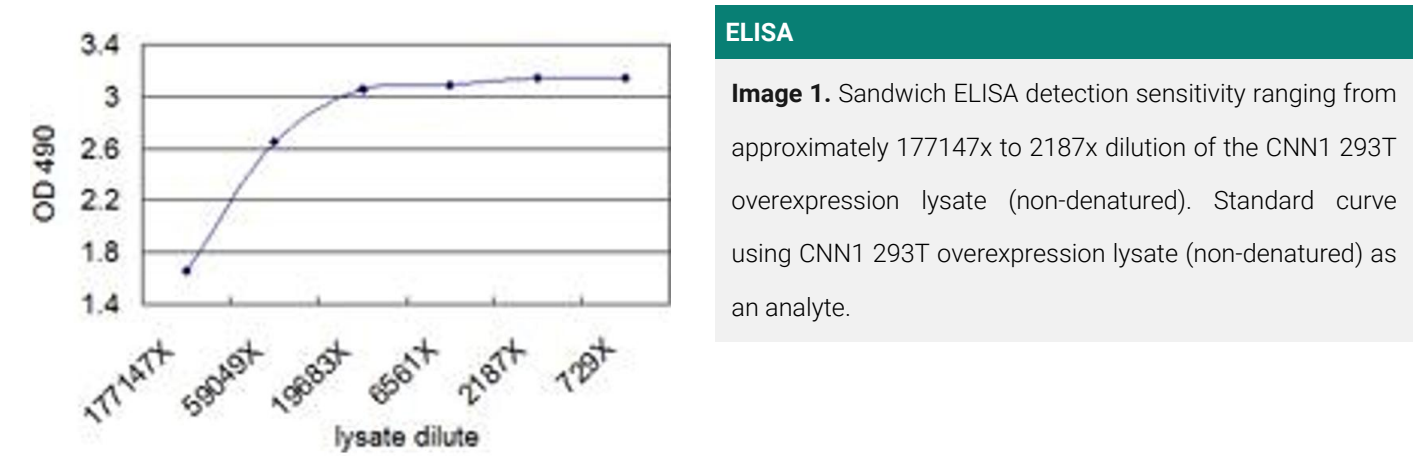
Application Details

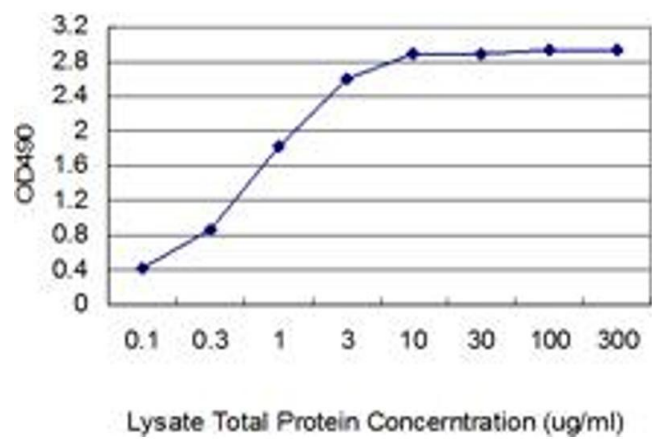
Application Notes:	Optimal working dilution should be determined by the investigator.
Restrictions:	For Research Use only

Handling

Handling Advice:	Please aliquot to avoid repeated freeze thaw cycle.
Storage:	-20 °C
Storage Comment:	Store reagents of the antibody pair set at -20°C or lower. Please aliquot to avoid repeated freeze thaw cycle. Reagents should be returned to -20°C storage immediately after use.

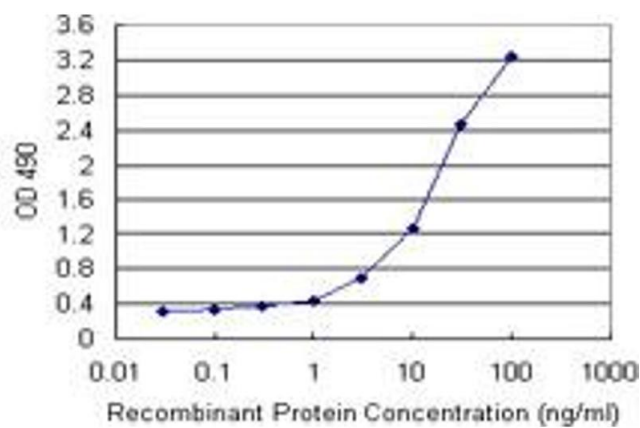
Images





ELISA

Image 2. Standard curve using human uterus myoma tissue lysate as an analyte (non-denatured). Sandwich ELISA detection sensitivity ranging from 100 ng/ml to 10 ug/ml for lysate total protein.



ELISA

Image 3. Sandwich ELISA detection sensitivity ranging from 0.03 ng/mL to 100 ng/mL.