

Datasheet for ABIN1341224

FBLN1 (Human) IP-WB Antibody Pair[Go to Product page](#)**1** Image

Overview

Quantity:	1 set
Target:	Fibulin 1 (FBLN1)
Reactivity:	Human
Host:	Rabbit, Mouse
Application:	Immunoprecipitation (IP)

Product Details

Purpose:	This IP-WB antibody pair set comes with one antibody for immunoprecipitation and another to detect the precipitated protein in western blot.
Cross-Reactivity:	Human
Characteristics:	This IP-WB antibody pair set comes with one antibody for immunoprecipitation and another to detect the precipitated protein in western blot.
Components:	Antibody pair set content: 1. Antibody pair for IP: mouse monoclonal anti-FBLN1 (300 µg) 2. Antibody pair for WB: rabbit polyclonal anti-FBLN1 (50 µL)

Target Details

Target:	Fibulin 1 (FBLN1)
Alternative Name:	FBLN1 (FBLN1 Products)
Sub Type:	Cocktail
Background:	Full Gene Name: fibulin 1

Target Details

	Synonyms: FBLN
Gene ID:	2192

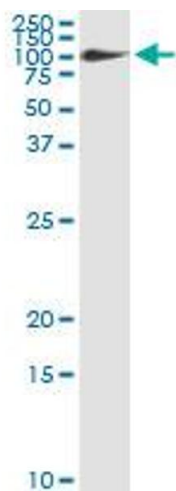
Application Details

Application Notes:	Optimal working dilution should be determined by the investigator.
Restrictions:	For Research Use only

Handling

Handling Advice:	Please aliquot to avoid repeated freeze thaw cycle.
Storage:	-20 °C
Storage Comment:	Store reagents of the antibody pair set at -20°C or lower. Please aliquot to avoid repeated freeze thaw cycle. Reagents should be returned to -20°C storage immediately after use.

Images



Western Blotting

Image 1. Immunoprecipitation of FBLN1 transfected lysate using mouse monoclonal anti-FBLN1 and Protein A Magnetic Bead