



[Go to Product page](#)

Datasheet for ABIN1341440

## HLA-C (Human) IP-WB Antibody Pair

### 1 Image

#### Overview

Quantity:	1 set
Target:	HLA-C
Reactivity:	Human
Host:	Rabbit, Mouse
Application:	Immunoprecipitation (IP)

#### Product Details

Purpose:	This IP-WB antibody pair set comes with one antibody for immunoprecipitation and another to detect the precipitated protein in western blot.
Cross-Reactivity:	Human
Characteristics:	This IP-WB antibody pair set comes with one antibody for immunoprecipitation and another to detect the precipitated protein in western blot.
Components:	Antibody pair set content: 1. Antibody pair for IP: rabbit polyclonal anti-HLA-C (300 µL) 2. Antibody pair for WB: mouse purified polyclonal anti-HLA-C (50 µg)

#### Target Details

Target:	HLA-C
Alternative Name:	HLA-C ( <a href="#">HLA-C Products</a> )
Sub Type:	Cocktail
Background:	Full Gene Name: major histocompatibility complex, class I, C

## Target Details

Synonyms: D6S204,FLJ27082,HLA-Cw,HLA-Cw12,HLA-JY3,HLC-C,PSORS1

Gene ID: 3107

## Application Details

Application Notes: Optimal working dilution should be determined by the investigator.

Restrictions: For Research Use only

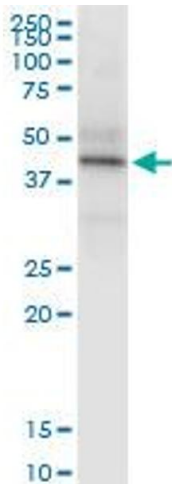
## Handling

Handling Advice: Please aliquot to avoid repeated freeze thaw cycle.

Storage: -20 °C

Storage Comment: Store reagents of the antibody pair set at -20°C or lower. Please aliquot to avoid repeated freeze thaw cycle. Reagents should be returned to -20°C storage immediately after use.

## Images



### Western Blotting

**Image 1.** Immunoprecipitation of HLA-C transfected lysate using rabbit polyclonal anti-HLA-C and Protein A Magnetic Bead