



[Go to Product page](#)

Datasheet for ABIN1341466

HMGB2 (Human) Matched Antibody Pair

2 Images

Overview

Quantity: 1 set

Target: HMGB2

Reactivity: Human

Host: Mouse

Application: ELISA

Product Details

Purpose: This antibody pair set comes with matched antibody pair to detect and quantify protein level of human HMGB2.

Cross-Reactivity: Human

Characteristics: This antibody pair set comes with matched antibody pair to detect and quantify protein level of human HMGB2.

Components: Antibody pair set content:
1. Capture antibody: mouse monoclonal anti-HMGB2 (100 µg)
2. Detection antibody: biotinylated mouse monoclonal anti-HMGB2, IgG1 Kappa (50 µg)
*Reagents are sufficient for at least 3-5 x 96 well plates using recommended protocols.

Target Details

Target: HMGB2

Alternative Name: HMGB2 ([HMGB2 Products](#))

Sub Type: Cocktail

Target Details

Background: Full Gene Name: high-mobility group box 2
Synonyms: HMG2

Gene ID: 3148

Application Details

Application Notes: Optimal working dilution should be determined by the investigator.

Restrictions: For Research Use only

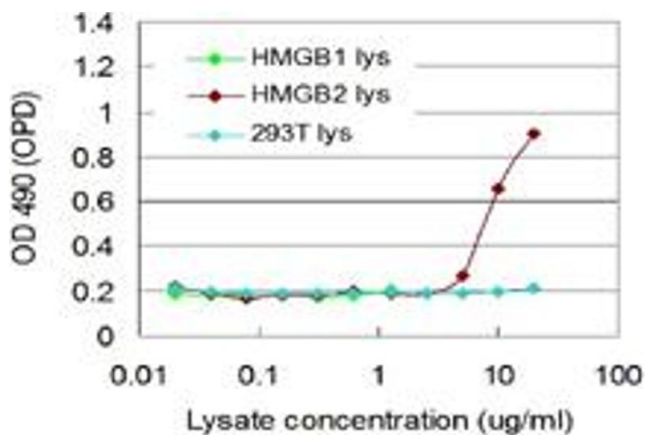
Handling

Handling Advice: Please aliquot to avoid repeated freeze thaw cycle.

Storage: -20 °C

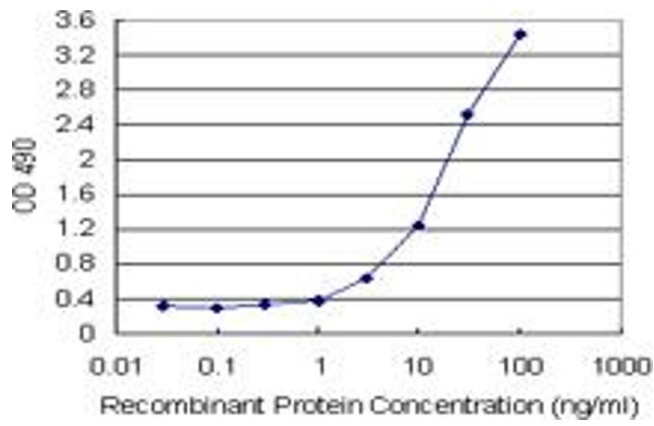
Storage Comment: Store reagents of the antibody pair set at -20°C or lower. Please aliquot to avoid repeated freeze thaw cycle. Reagents should be returned to -20°C storage immediately after use.

Images



ELISA

Image 1. HMGB2 293T overexpression lysate (non-denatured) was used as an analyte. Sandwich ELISA detection sensitivity ranging from approximately 5 µg/ml to 20 µg/ml. HMGB1 293T overexpression lysate and 293T non-transfected lysate were used as a negative control.



ELISA

Image 2. Sandwich ELISA detection sensitivity ranging from 0.3 ng/mL to 100 ng/mL.