



[Go to Product page](#)

Datasheet for ABIN1341469

## HMGB2 (Human) Matched Antibody Pair

### 2 Images

#### Overview

Quantity: 1 set

Target: HMGB2

Reactivity: Human

Host: Mouse

Application: ELISA

#### Product Details

Purpose: This antibody pair set comes with matched antibody pair to detect and quantify protein level of human HMGB2.

Cross-Reactivity: Human

Characteristics: This antibody pair set comes with matched antibody pair to detect and quantify protein level of human HMGB2.

Components: Antibody pair set content:

1. Capture antibody: mouse monoclonal anti-HMGB2 (100 µg)

2. Detection antibody: biotinylated mouse monoclonal anti-HMGB2, IgG2a Kappa (50 µg)

\*Reagents are sufficient for at least 3-5 x 96 well plates using recommended protocols.

#### Target Details

Target: HMGB2

Alternative Name: HMGB2 ([HMGB2 Products](#))

Sub Type: Cocktail

## Target Details

Background: Full Gene Name: high-mobility group box 2  
Synonyms: HMG2

Gene ID: 3148

## Application Details

Application Notes: Optimal working dilution should be determined by the investigator.

Restrictions: For Research Use only

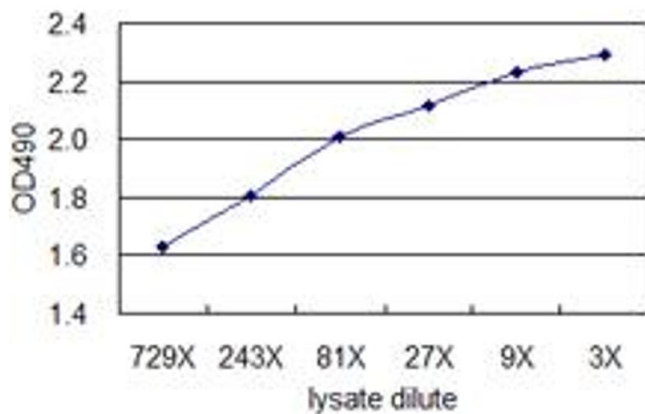
## Handling

Handling Advice: Please aliquot to avoid repeated freeze thaw cycle.

Storage: -20 °C

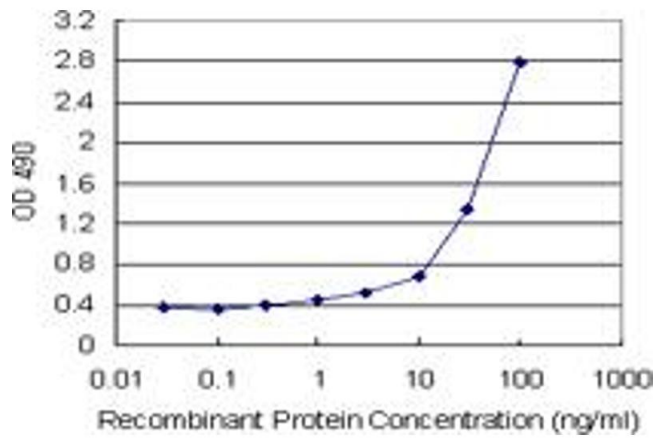
Storage Comment: Store reagents of the antibody pair set at -20°C or lower. Please aliquot to avoid repeated freeze thaw cycle. Reagents should be returned to -20°C storage immediately after use.

## Images



### ELISA

**Image 1.** Standard curve using 293T overexpression lysate (non-denatured) as an analyte. Sandwich ELISA detection sensitivity ranging from approximately 729x to 3x dilution of the 293T overexpression lysate (non-denatured).



## ELISA

**Image 2.** Sandwich ELISA detection sensitivity ranging from 0.3 ng/mL to 100 ng/mL.